



Ftool

Tutorial for creation and analysis of a plane truss and result visualization

Version 4.01

June 2024

<http://www.ftool.com.br>

This tutorial:

<https://www.tecgraf.puc-rio.br/ftool/downloads/tutorialtruss.zip>

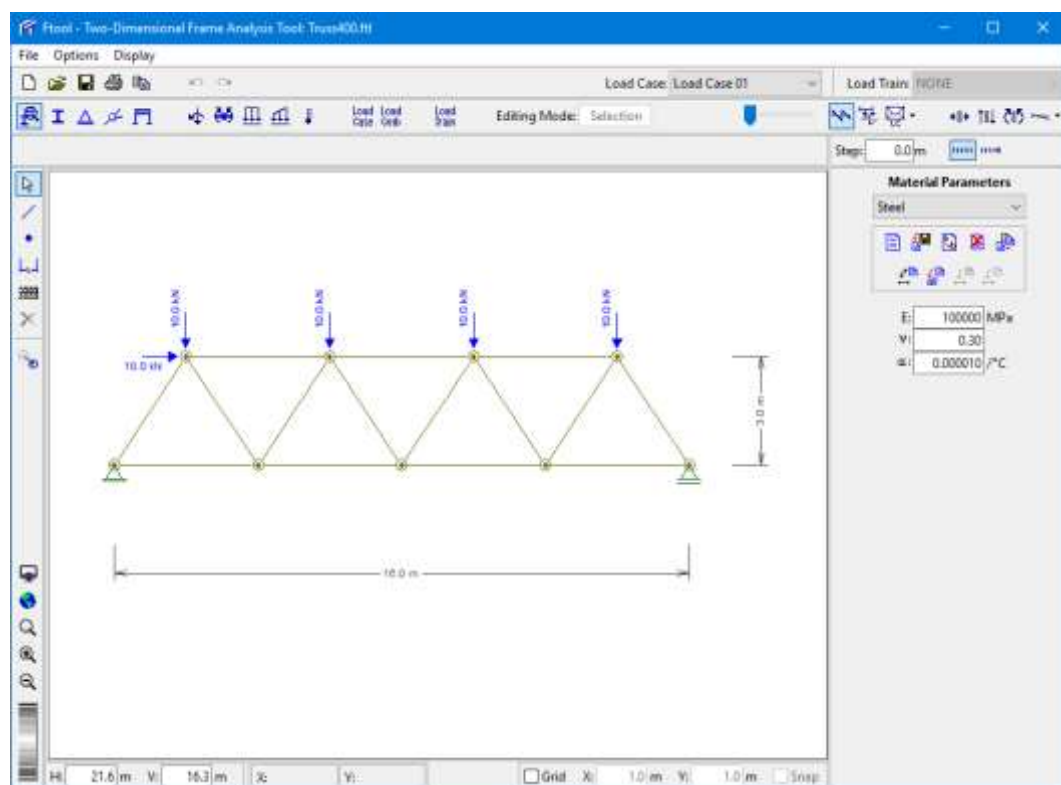


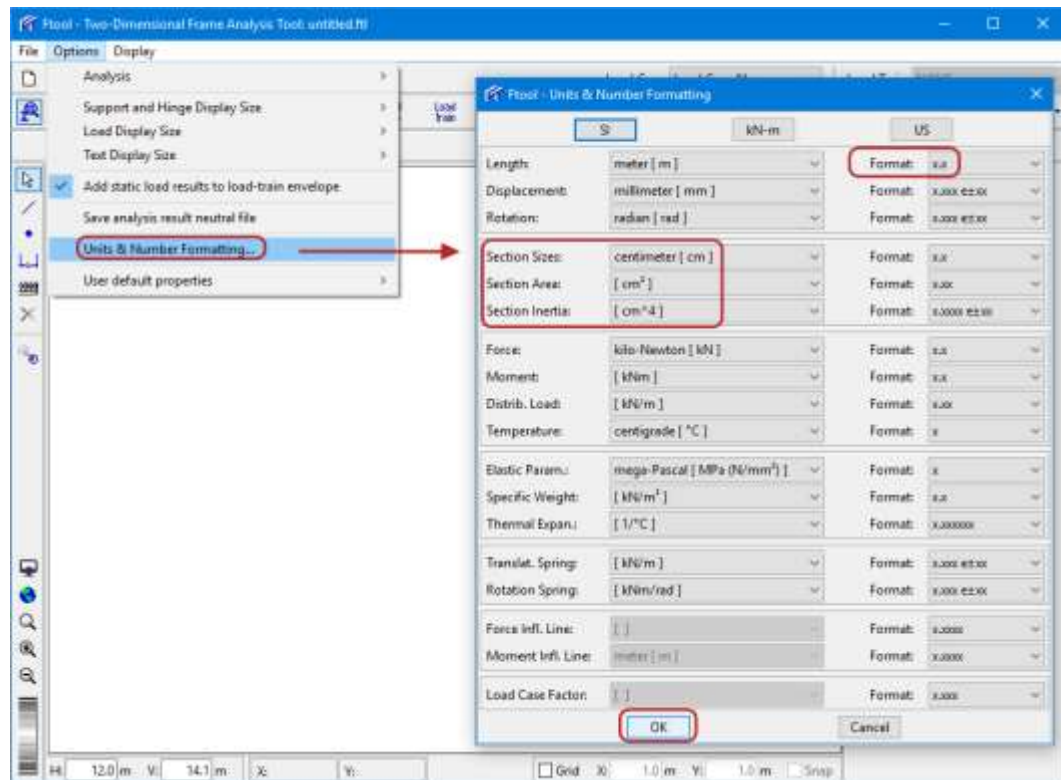


Table of Contents

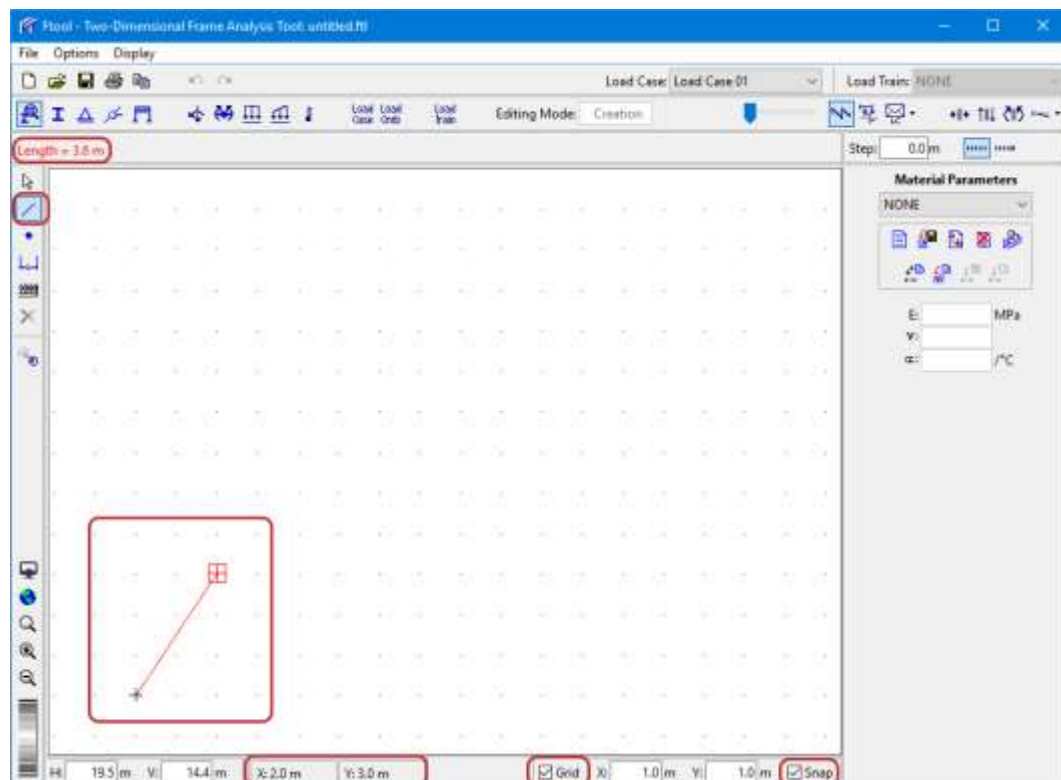
Specification of units and number formatting	3
Grid of coordinates and grid point spacing with attraction (<i>snap</i>); insertion of first member	3
Insertion of second member	4
Insertion of third member	4
Insertion of fourth member	5
Selection transform operation with copy (<i>Leave Original</i>)	5
Translation operation (<i>Move</i>), with copy (<i>Leave Original</i>), in keyboard mode	6
Repeat translation (<i>Move</i>) operation with copy (<i>Leave Original</i>) twice	6
Fit image of entire model on screen	7
Delete dangling member remaining for last move-with-copy operation	7
Create a file for truss model (command "Save as... ")	8
Creation of new material, selecting its type and name	8
Assignment of created material to all selected members	9
Creation of new cross-section for all members	9
Selection of C-shape cross-section type for all members	10
Definition of cross-section dimensions and assignment to all members	10
Definition of a pin support and assignment to left inferior node	11
Definition of a simple support and assignment to right inferior node	11
Selection of a single node followed by selection of all nodes through a rectangular fence using the mouse (with <i>Shift</i> key)	12
Application of a complete hinge to all selected nodes	12
Creation of a concentrated force load for left superior node	13
Definition of name of concentrated force load at left superior node	13
Definition of <i>X</i> and <i>Y</i> component values of concentrated force load and application to left superior node	14
Creation of concentrated force load for the other superior nodes	14
Definition of name and <i>Y</i> component value of concentrated force load and application to other superior nodes	15
Creation of dimension lines to indicate model global dimensions	15
Visualization of model deformed configuration response	16
Visualization of axial force result in truss members	16
Visualization of support reactions	17



Specification of units and number formatting

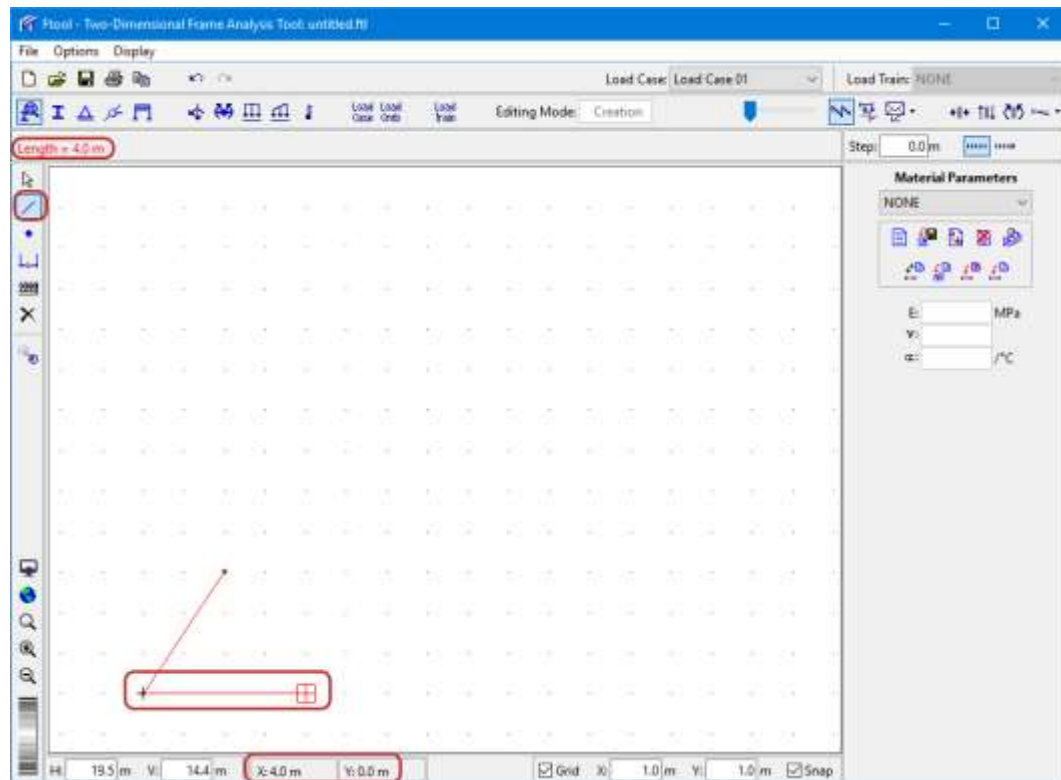


Grid of coordinates and grid point spacing with attraction (*snap*);
insertion of first member

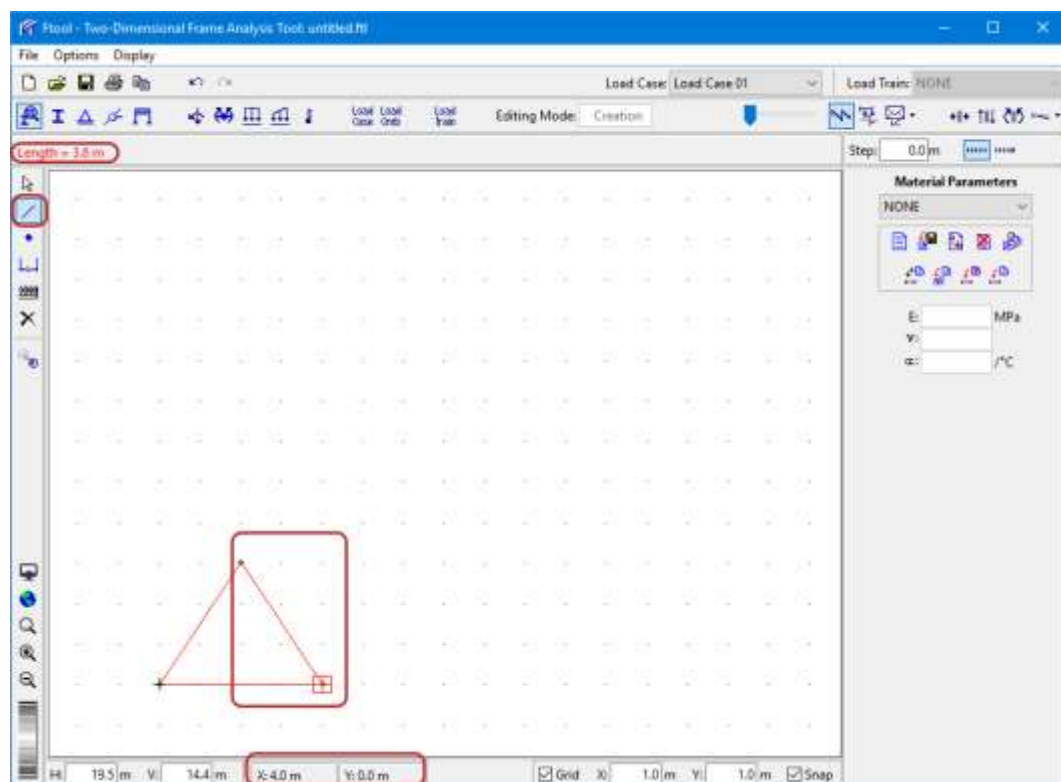




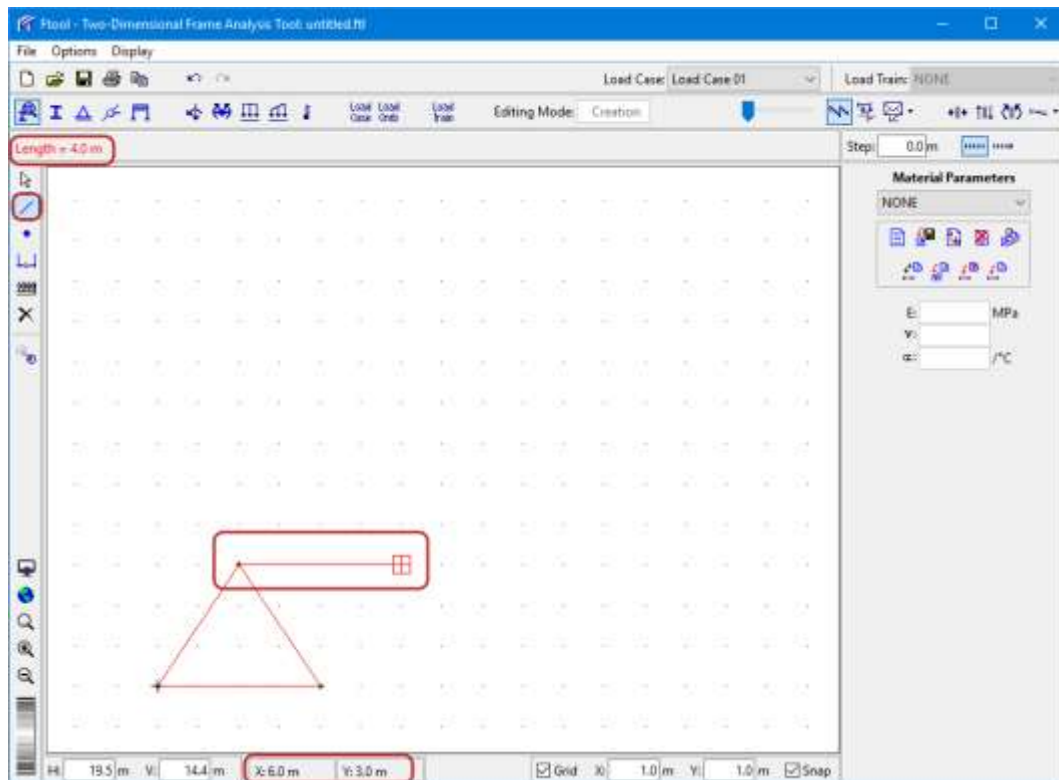
Insertion of second member



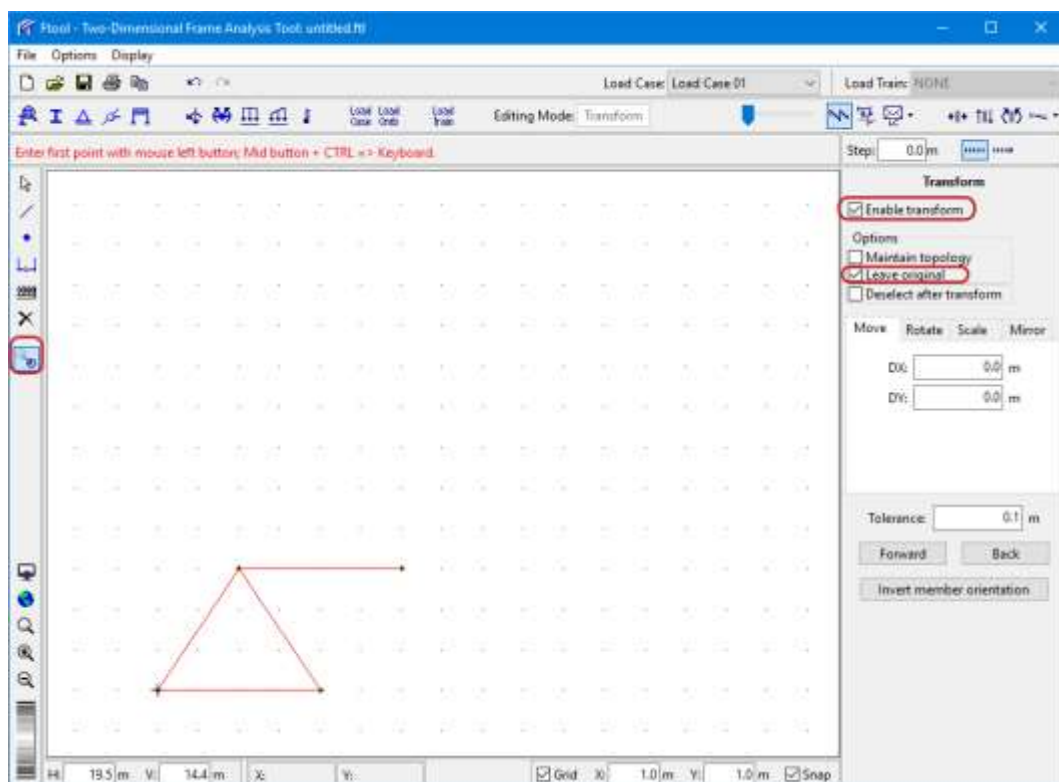
Insertion of third member



Insertion of fourth member

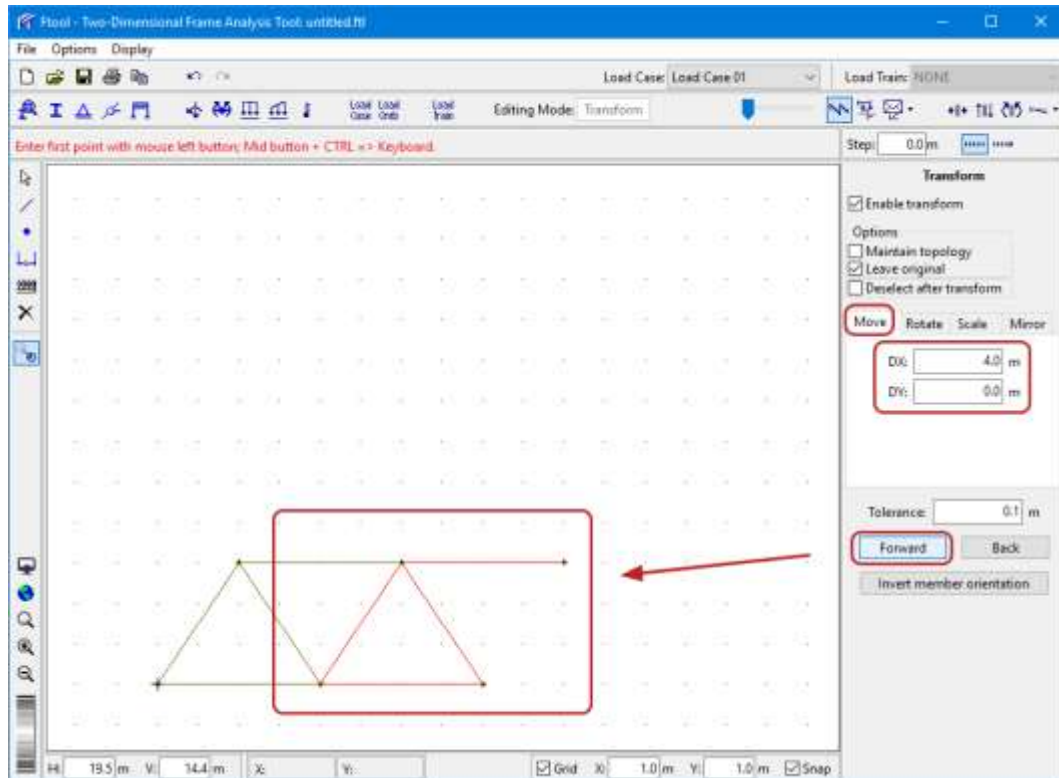


Selection transform operation with copy (*Leave Original*)

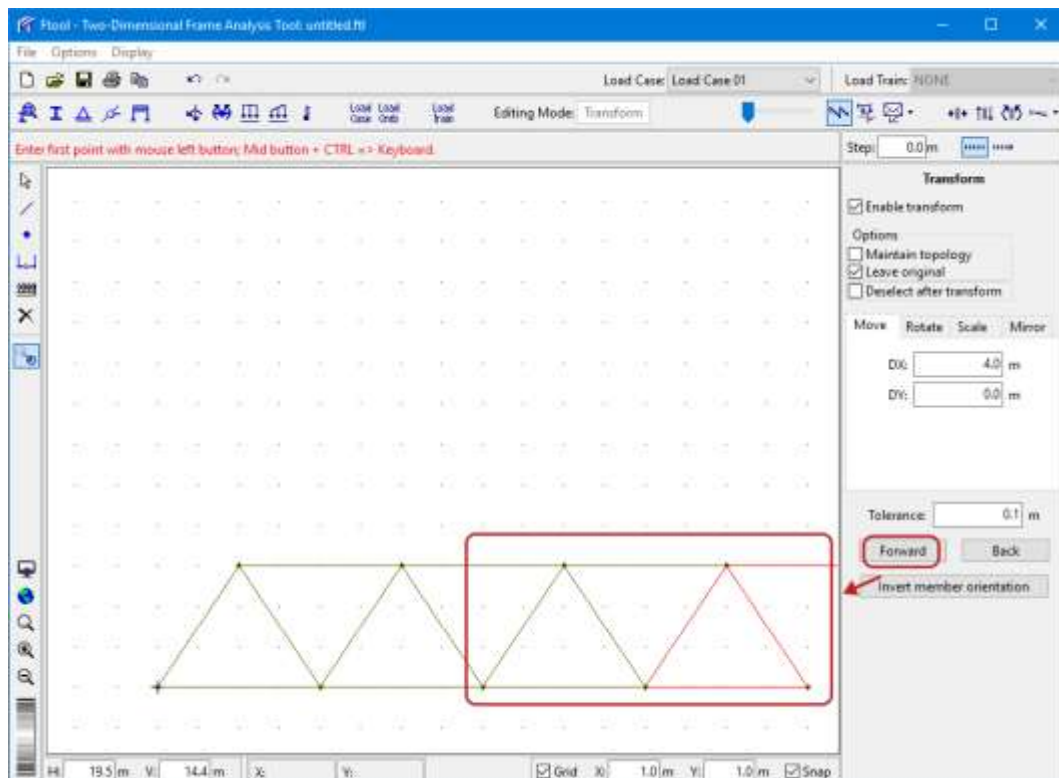




Translation operation (*Move*), with copy (*Leave Original*), in keyboard mode

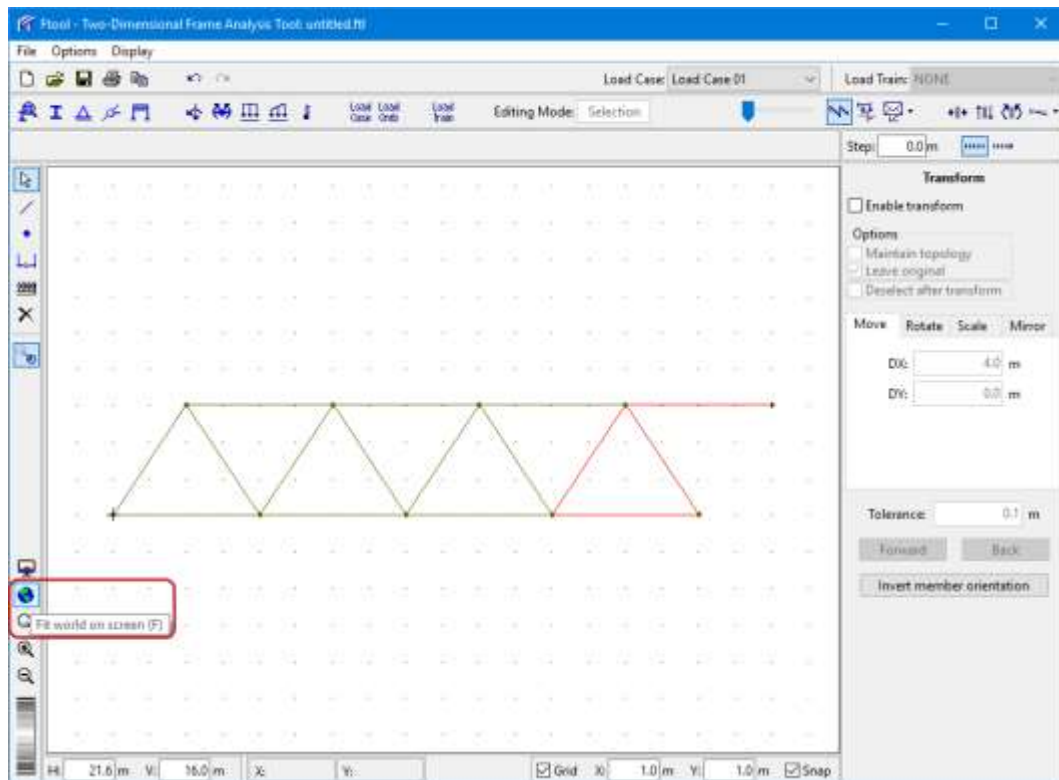


Repeat translation (*Move*) operation with copy (*Leave Original*) twice

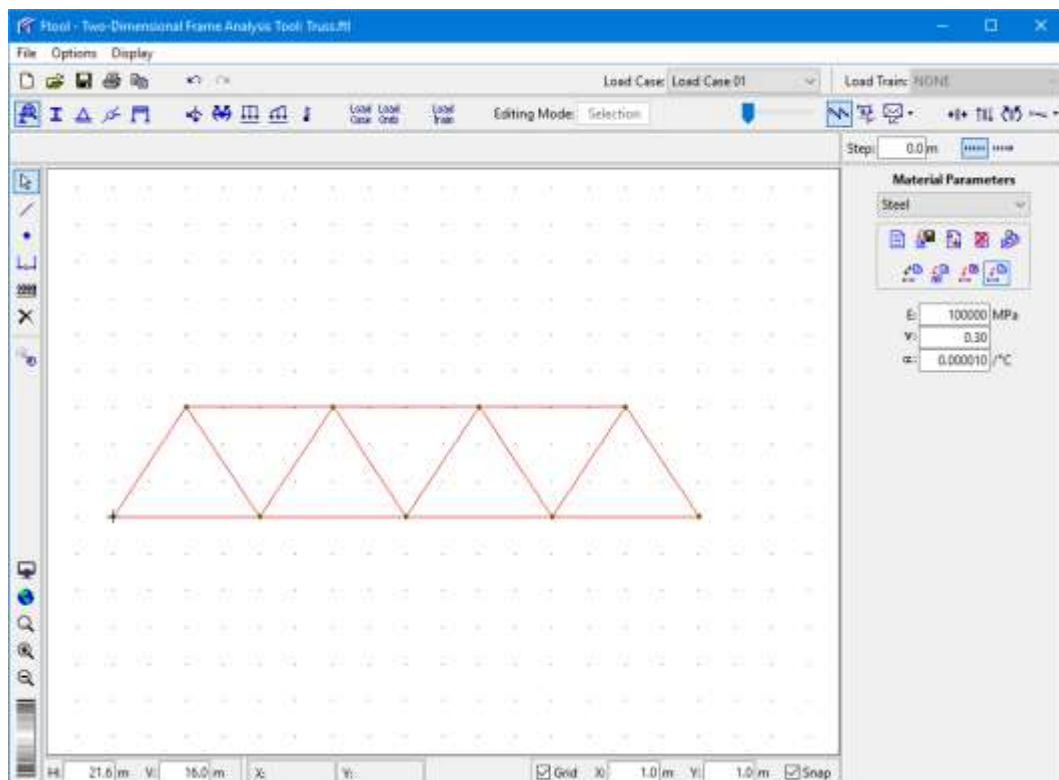




Fit image of entire model on screen

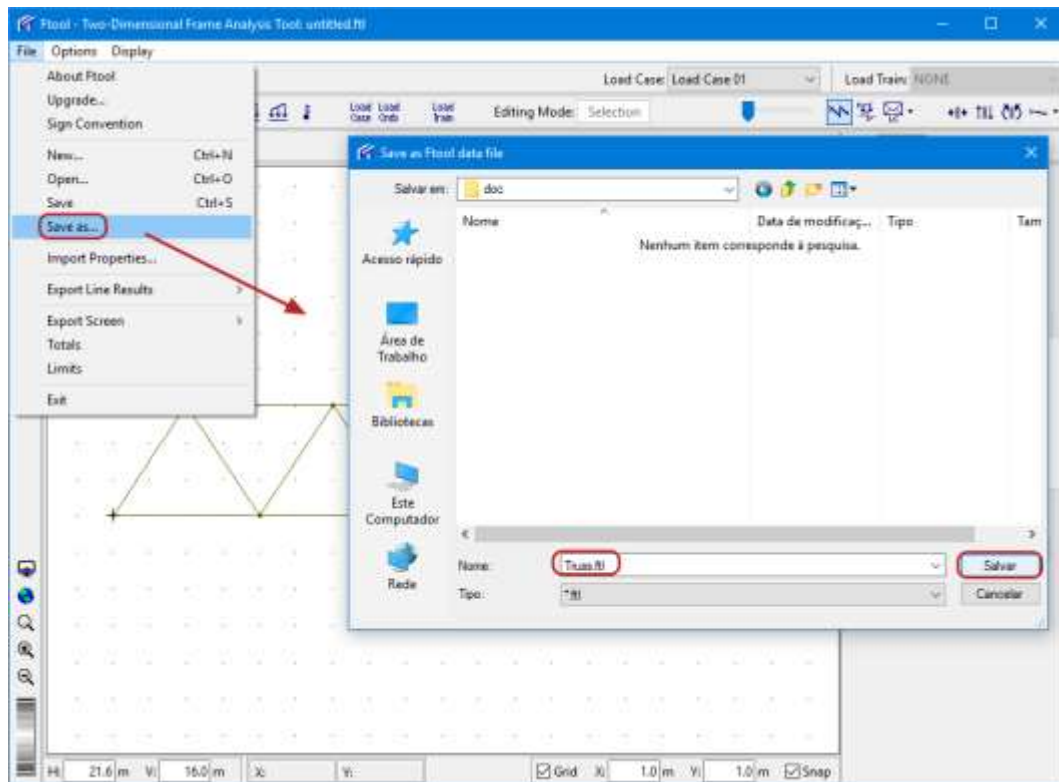


Delete dangling member remaining for last move-with-copy operation

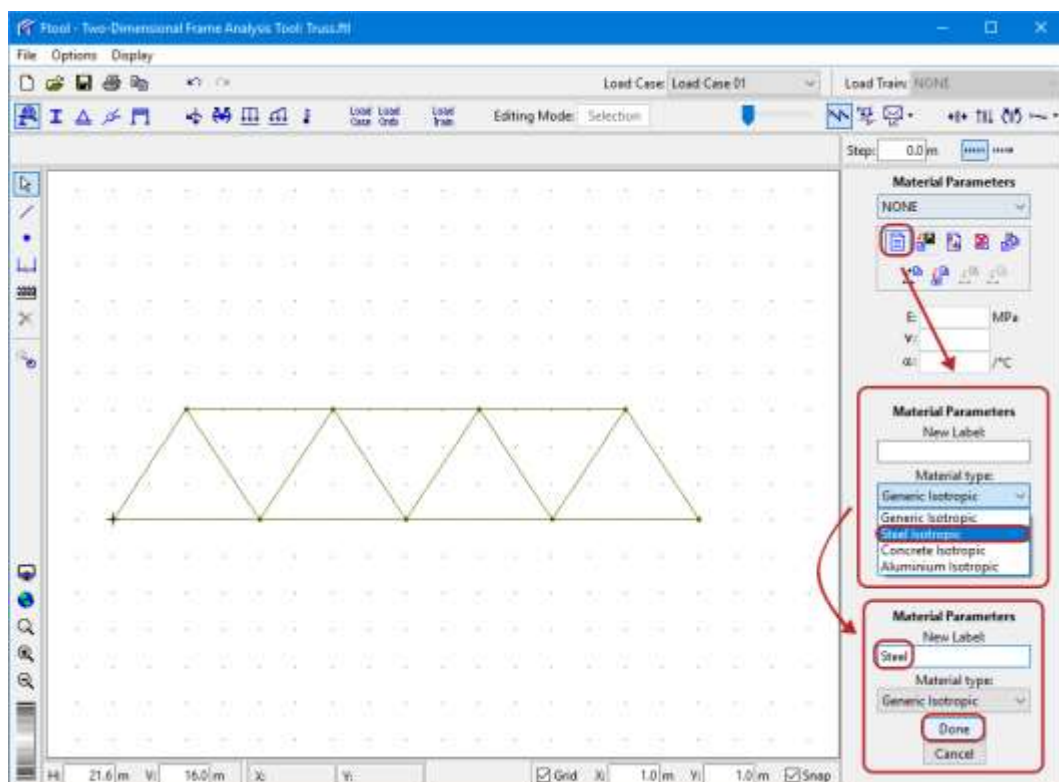




Create a file for truss model (command "Save as... ")

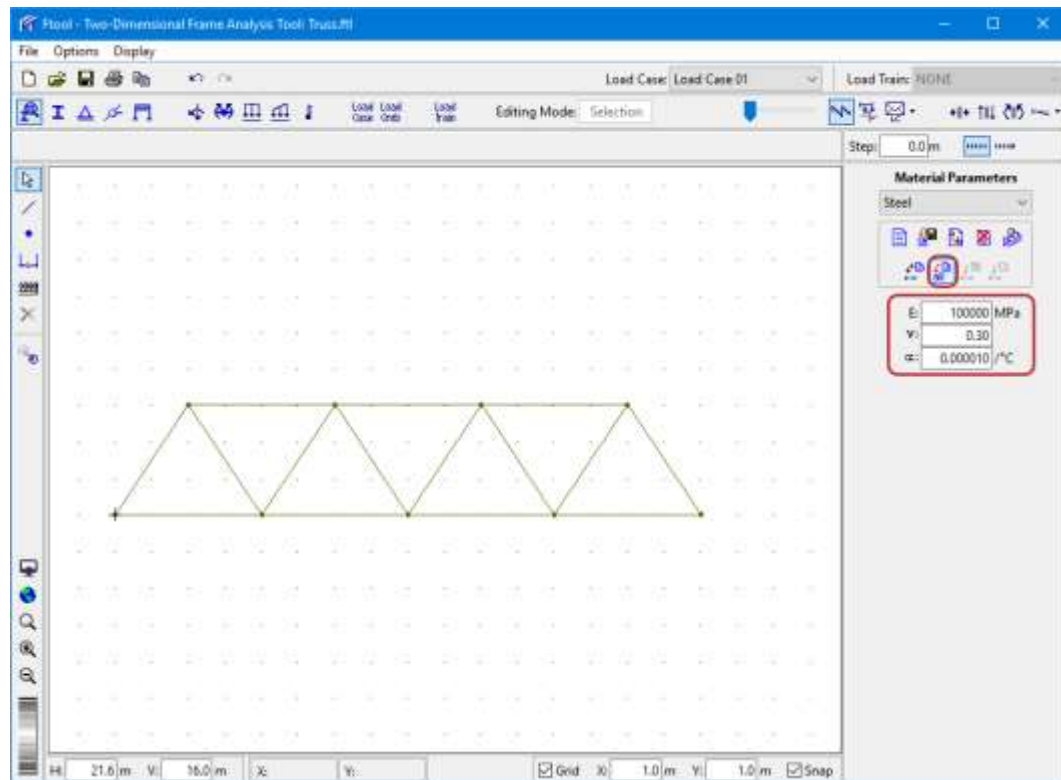


Creation of new material, selecting its type and name

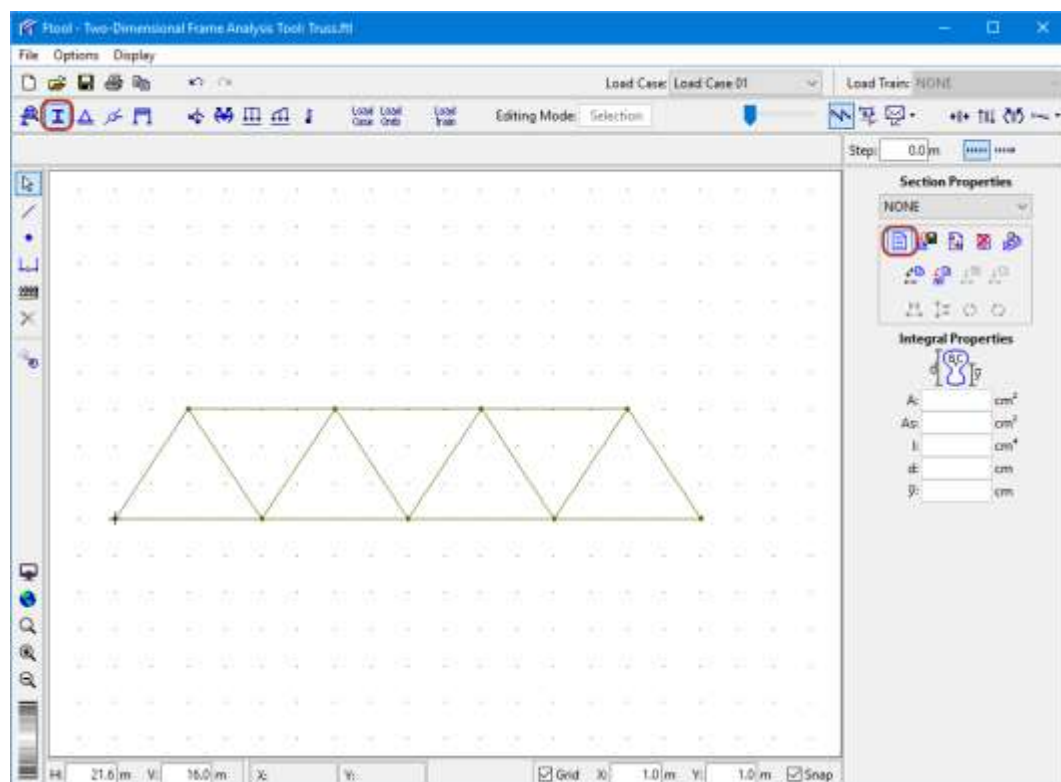




Assignment of created material to all selected members

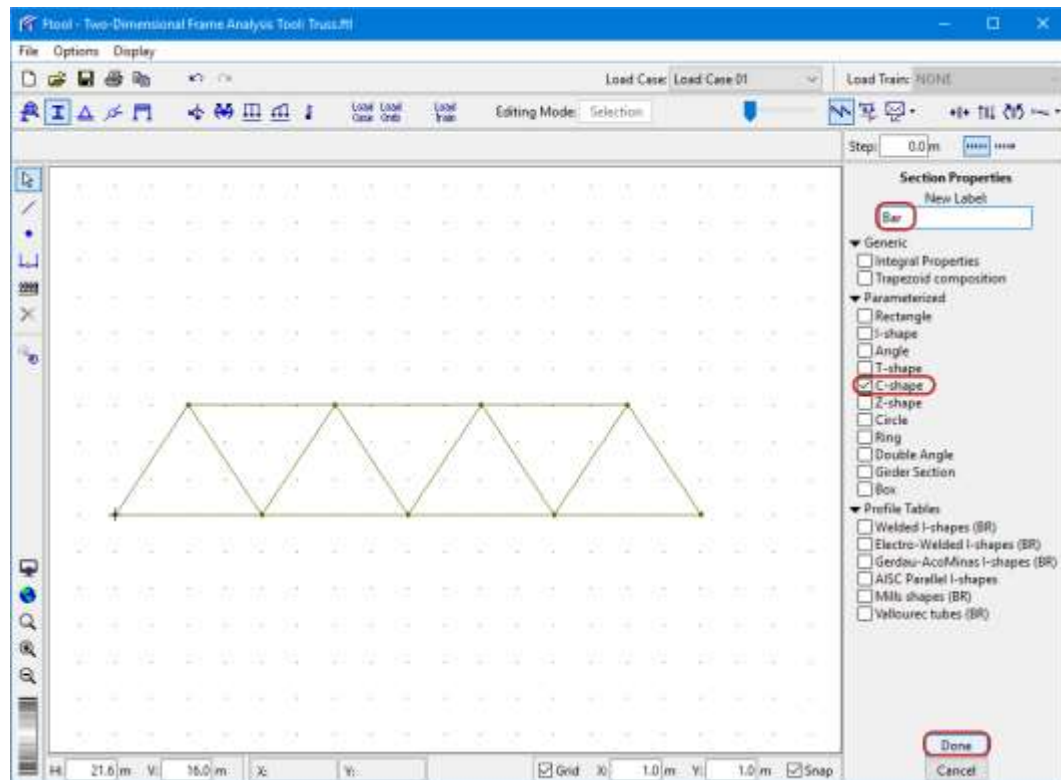


Creation of new cross-section for all members

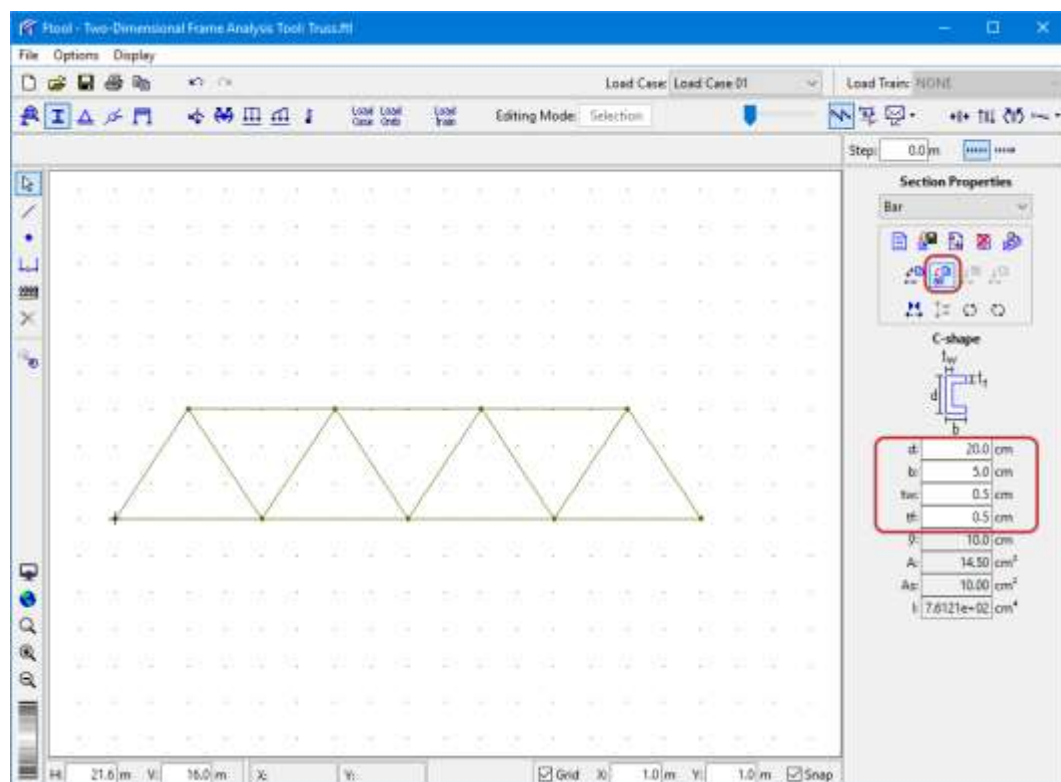




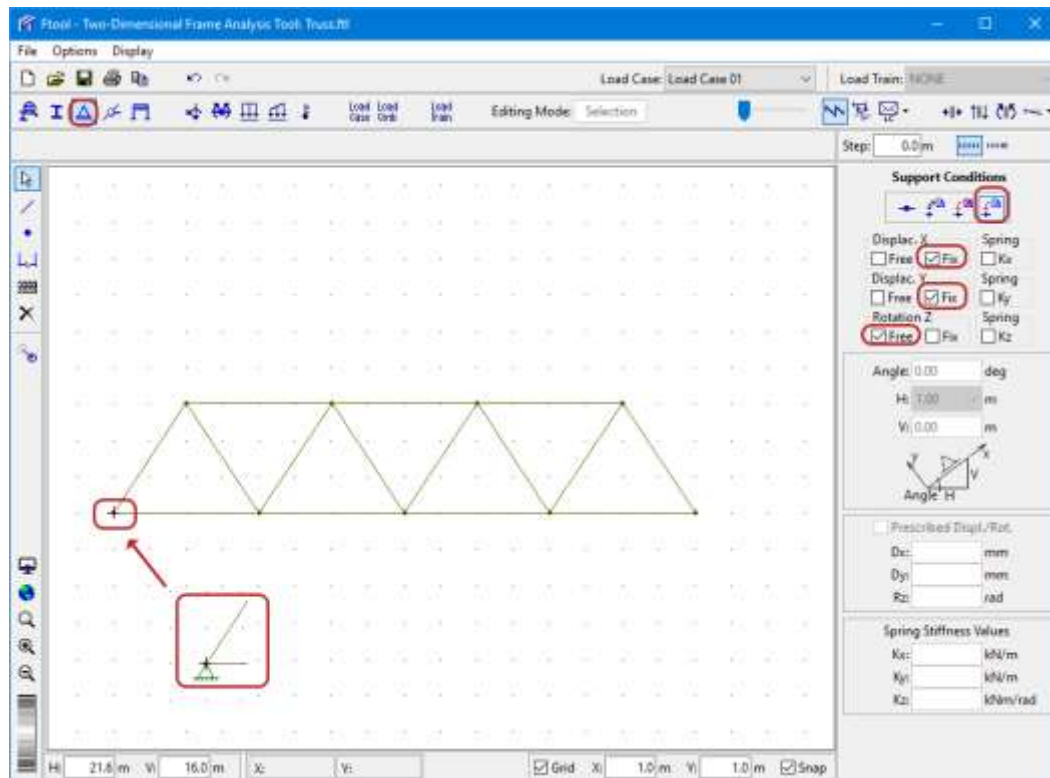
Selection of C-shape cross-section type for all members



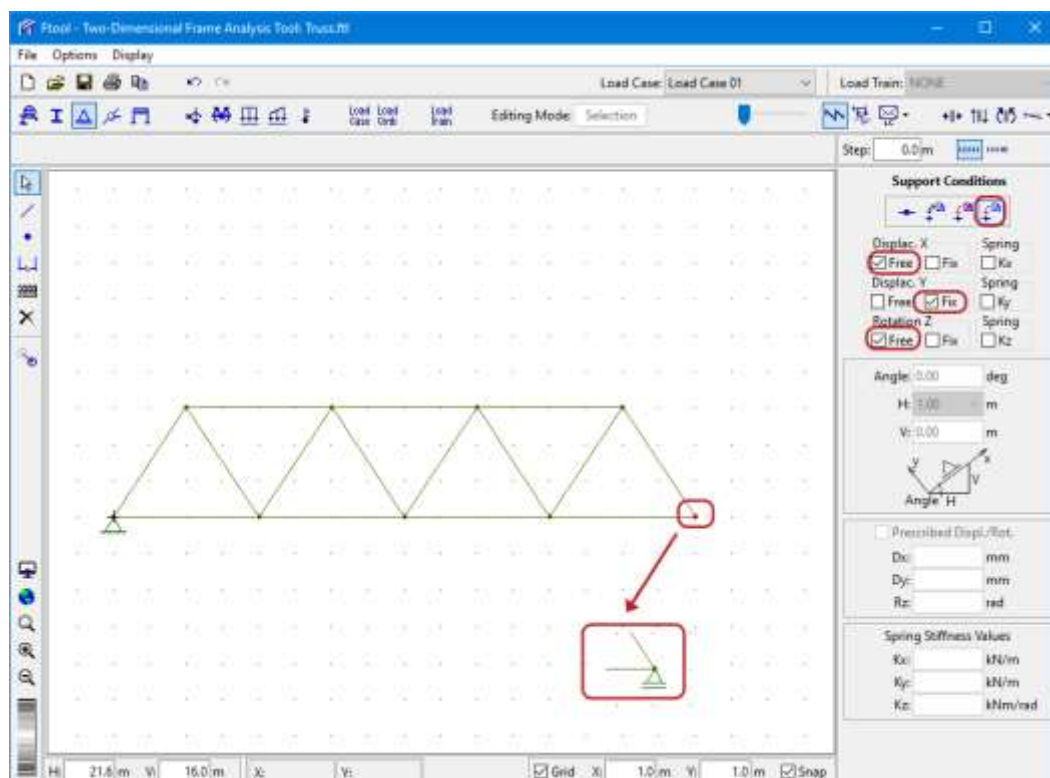
Definition of cross-section dimensions and assignment to all members



Definition of a pin support and assignment to left inferior node

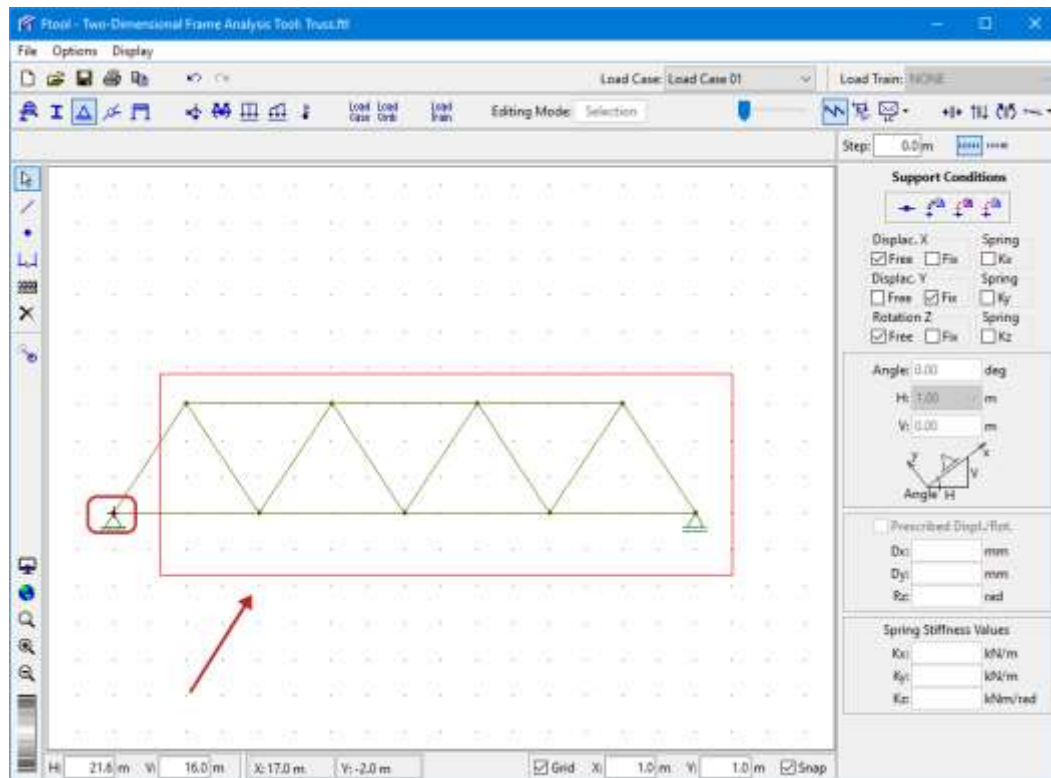


Definition of a simple support and assignment to right inferior node

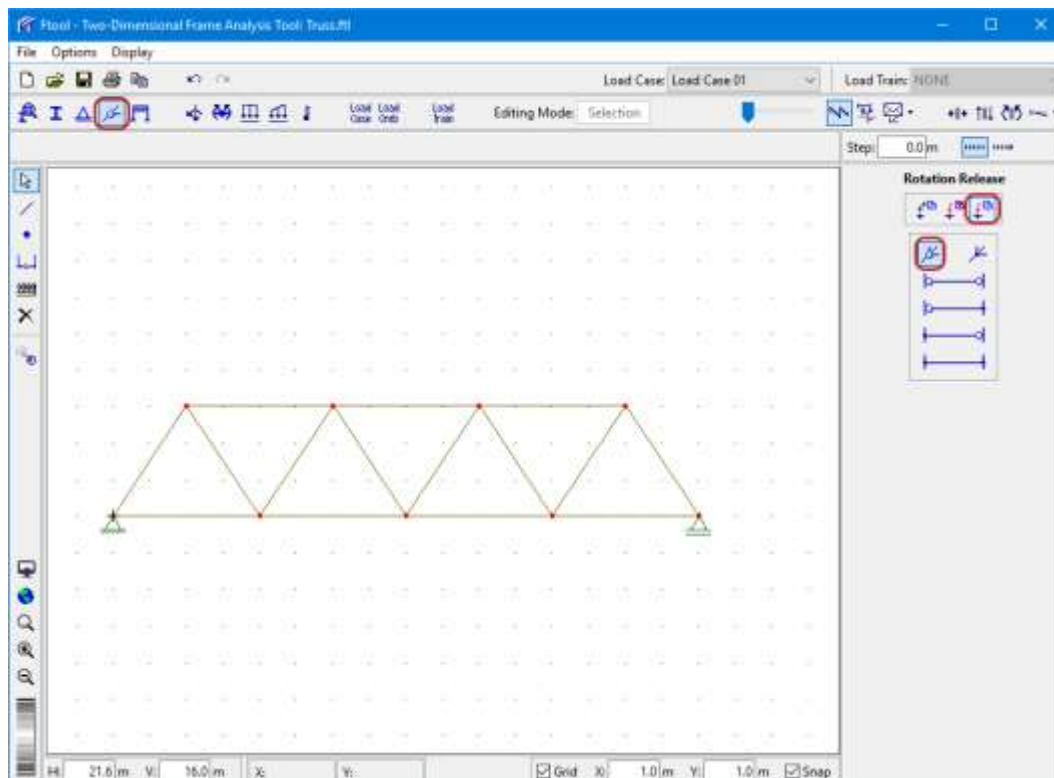




Selection of a single node followed by selection of all nodes through a rectangular fence using the mouse (with *Shift* key)

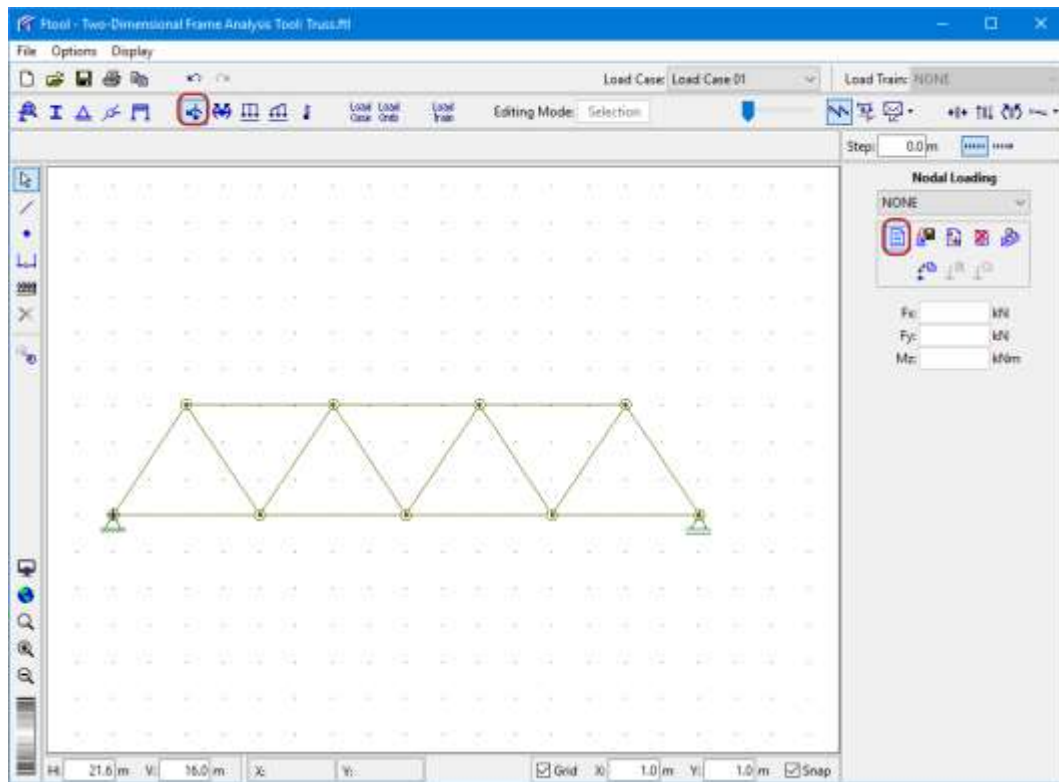


Application of a complete hinge to all selected nodes

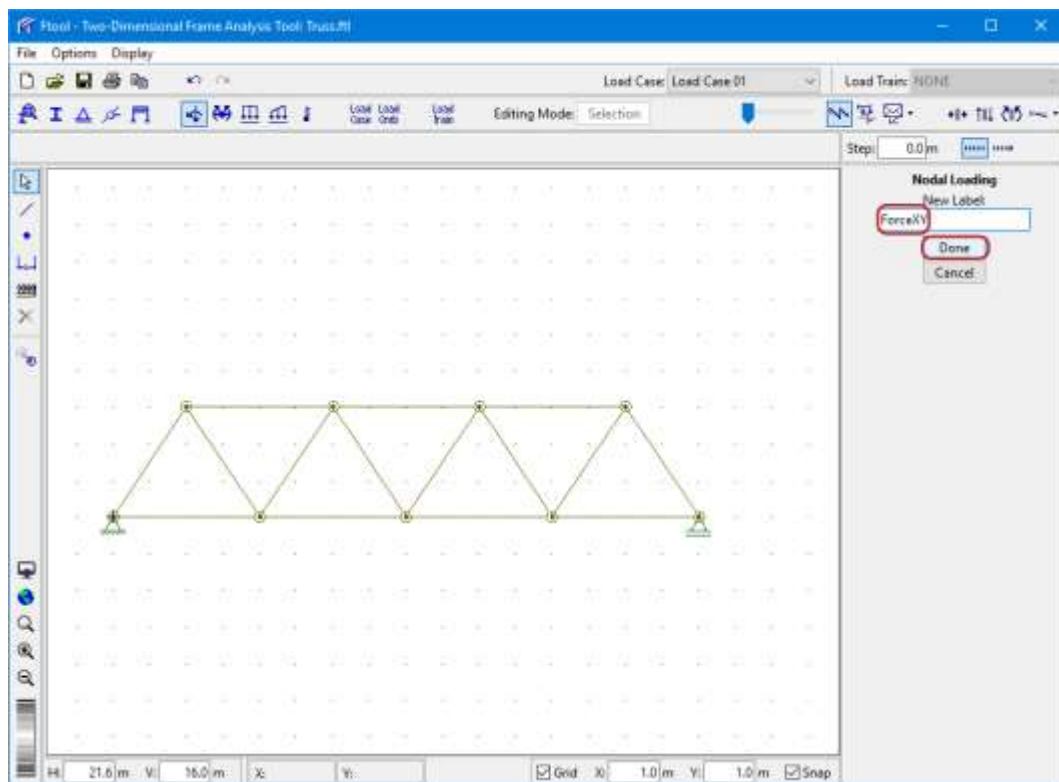




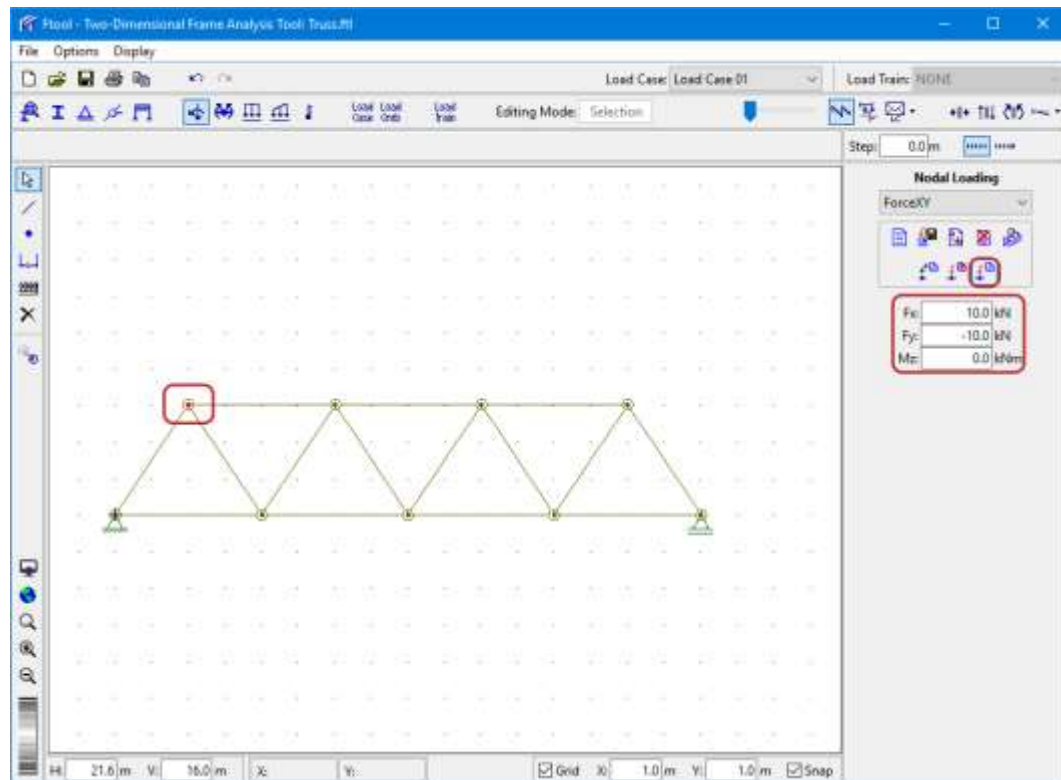
Creation of a concentrated force load for left superior node



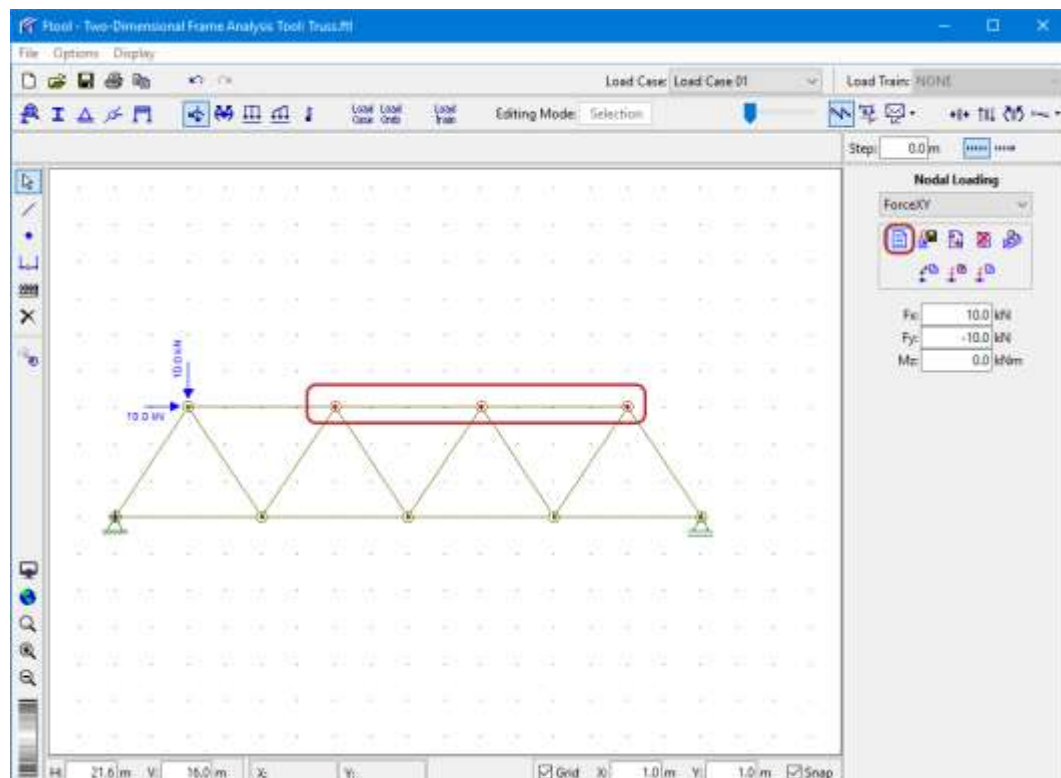
Definition of name of concentrated force load at left superior node



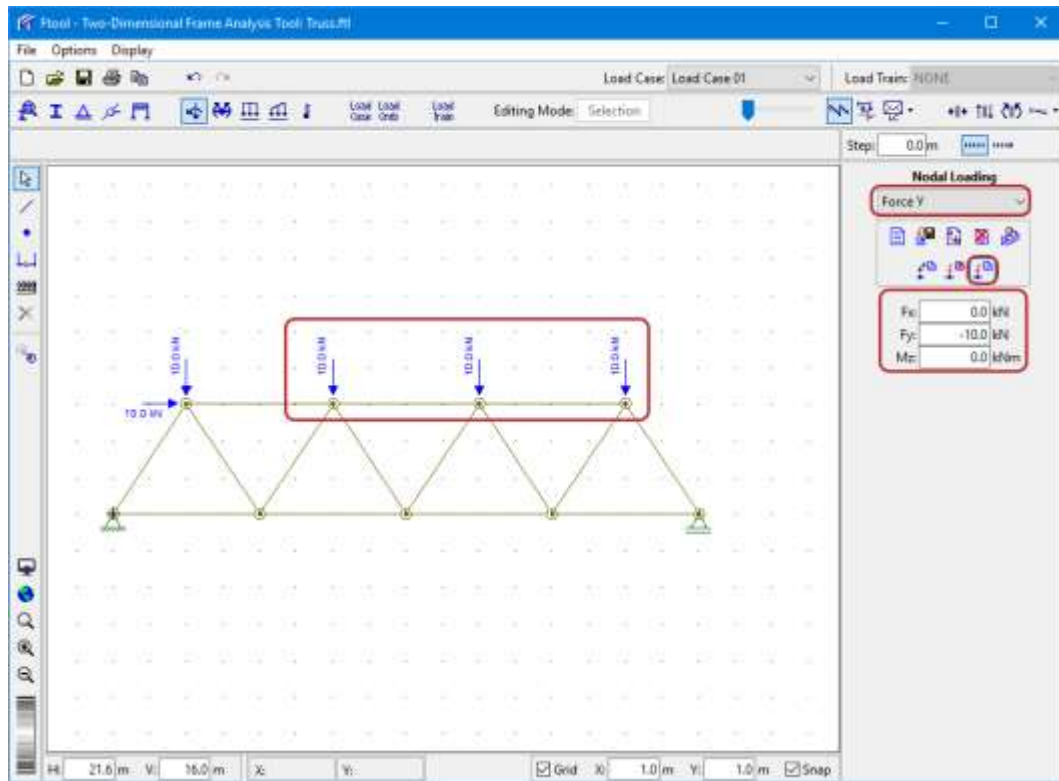
Definition of X and Y component values of concentrated force load and application to left superior node



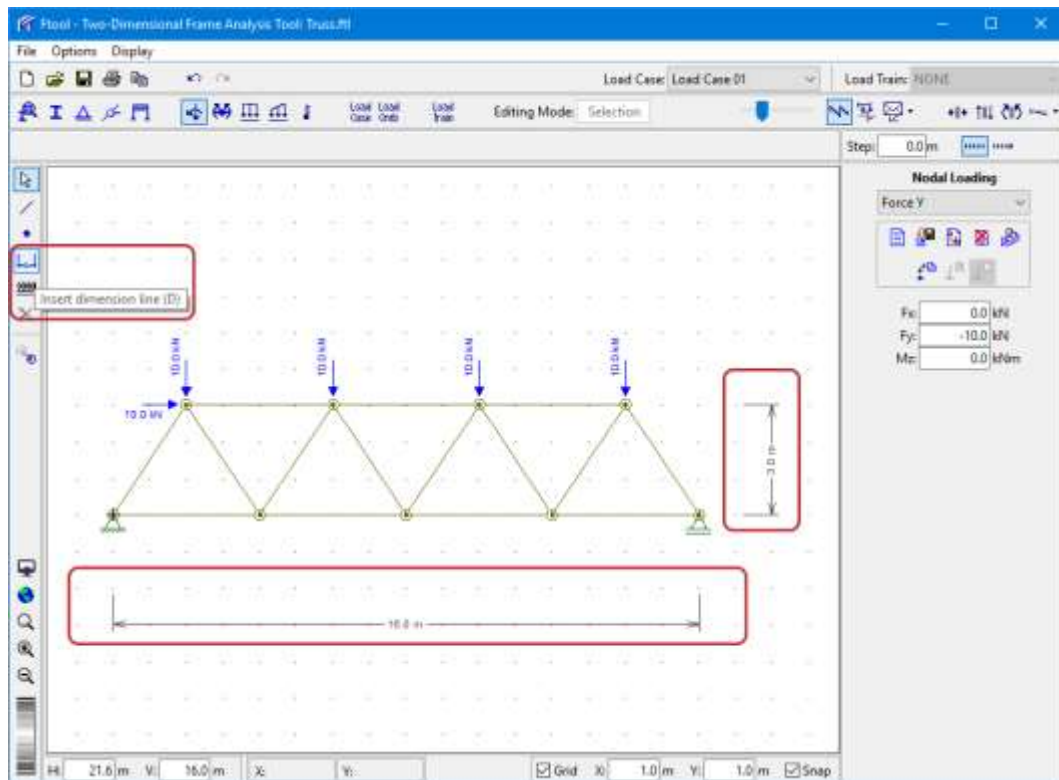
Creation of concentrated force load for the other superior nodes



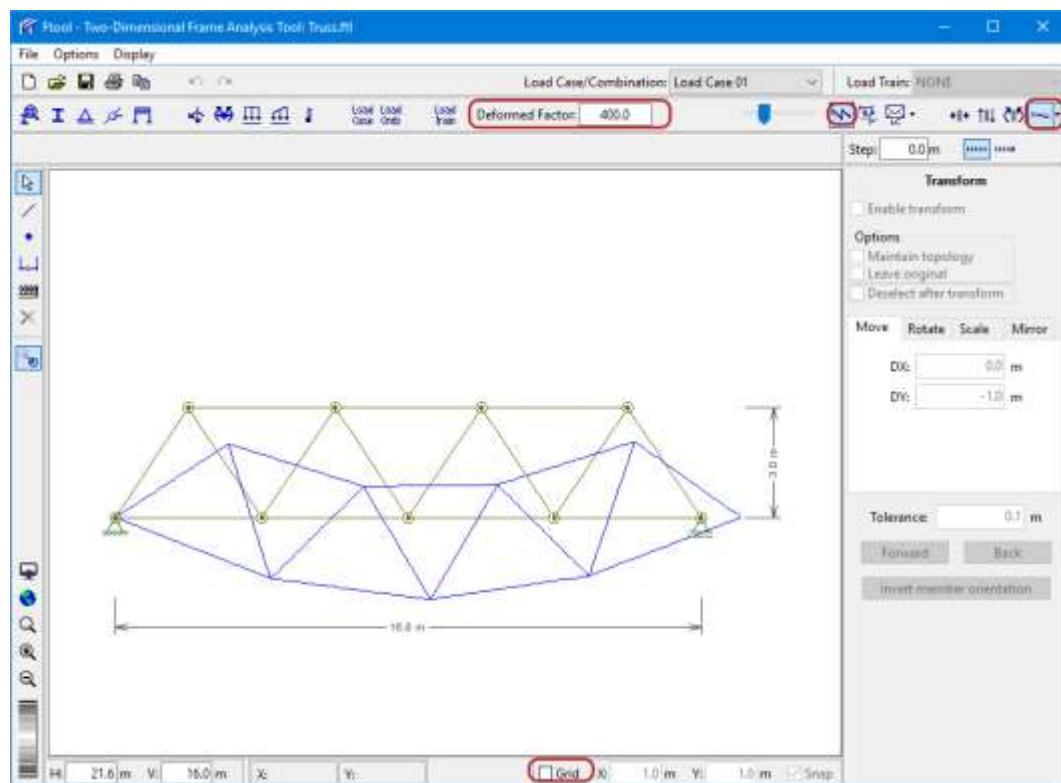
Definition of name and Y component value of concentrated force load and application to other superior nodes



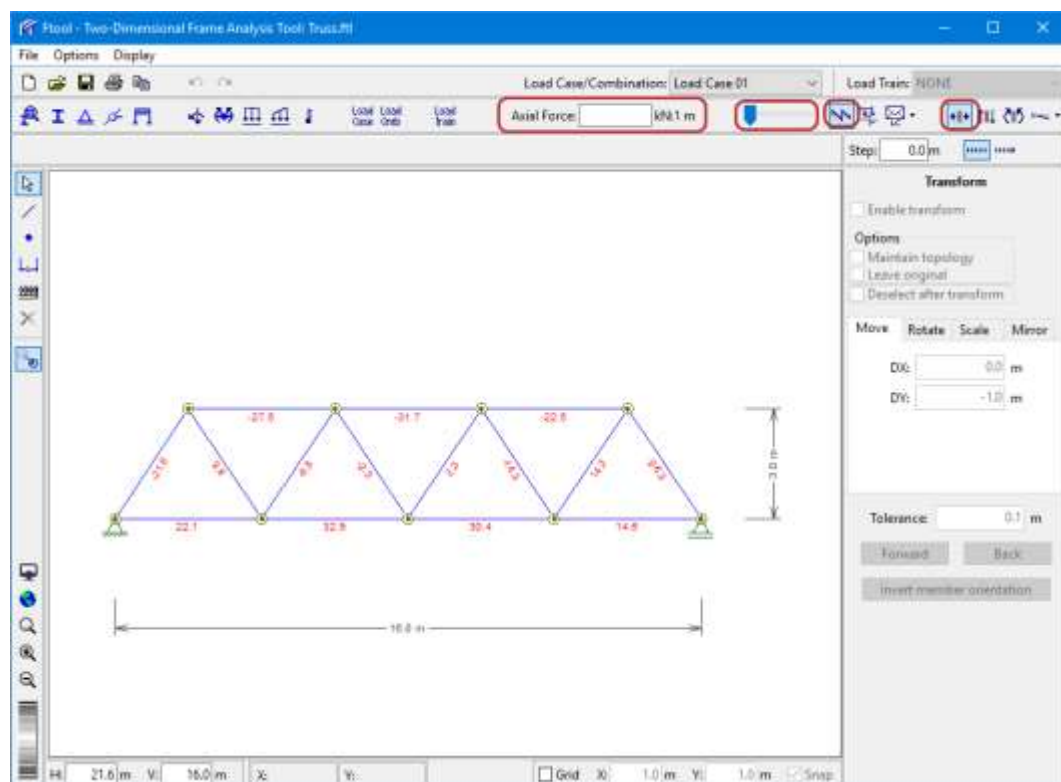
Creation of dimension lines to indicate model global dimensions



Visualization of model deformed configuration response



Visualization of axial force result in truss members





Visualization of support reactions

