



Ftool

Tutorial for the creation of a bridge model with static loads and live load trains, and visualization of results

Version 4.01

June 2024

<http://www.ftool.com.br>

This tutorial:

<https://www.tecgraf.puc-rio.br/ftool/downloads/tutorialloadtrain.zip>

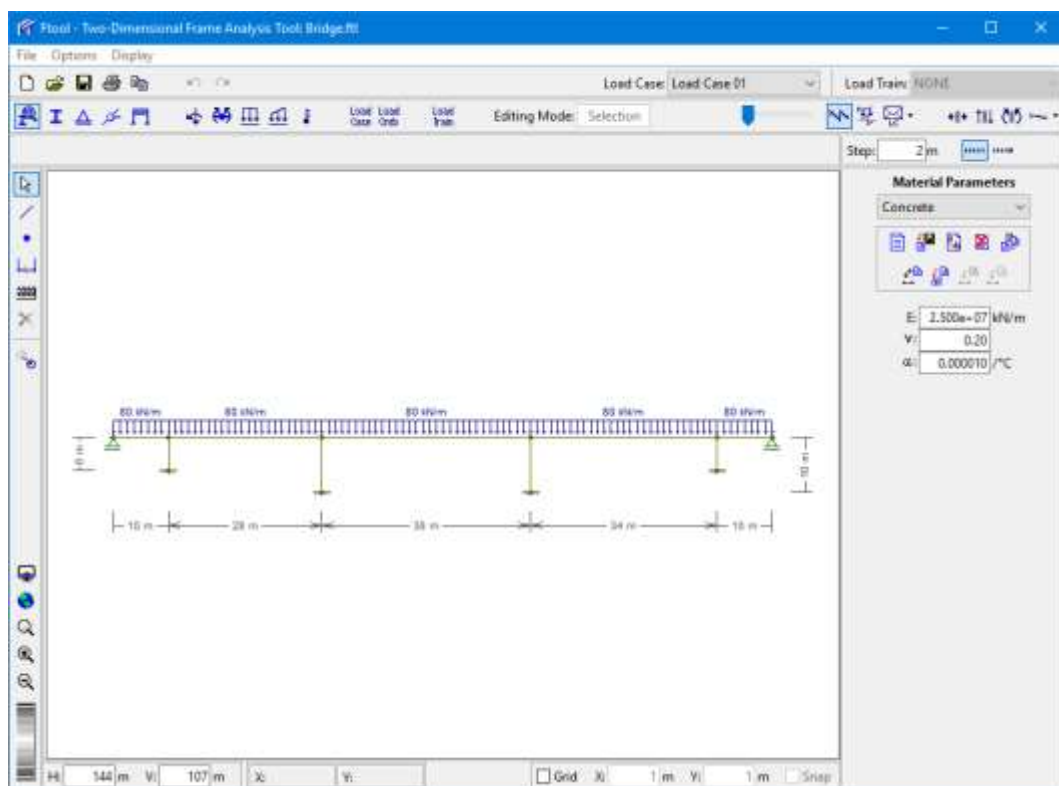


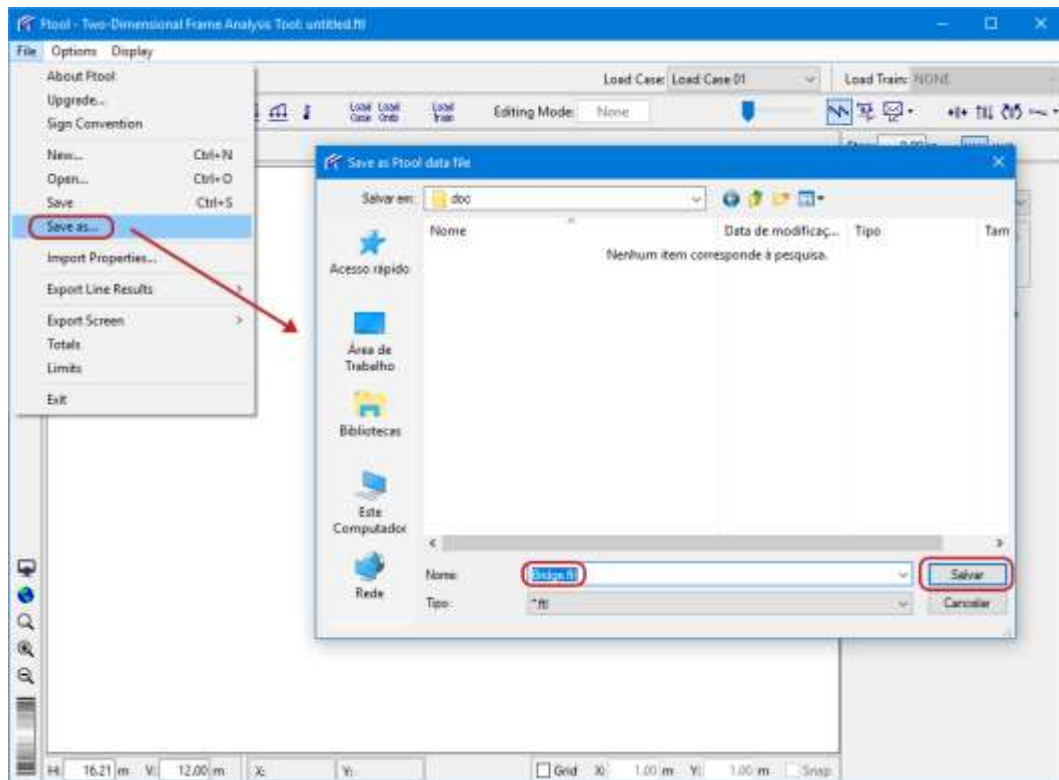


Table of Contents

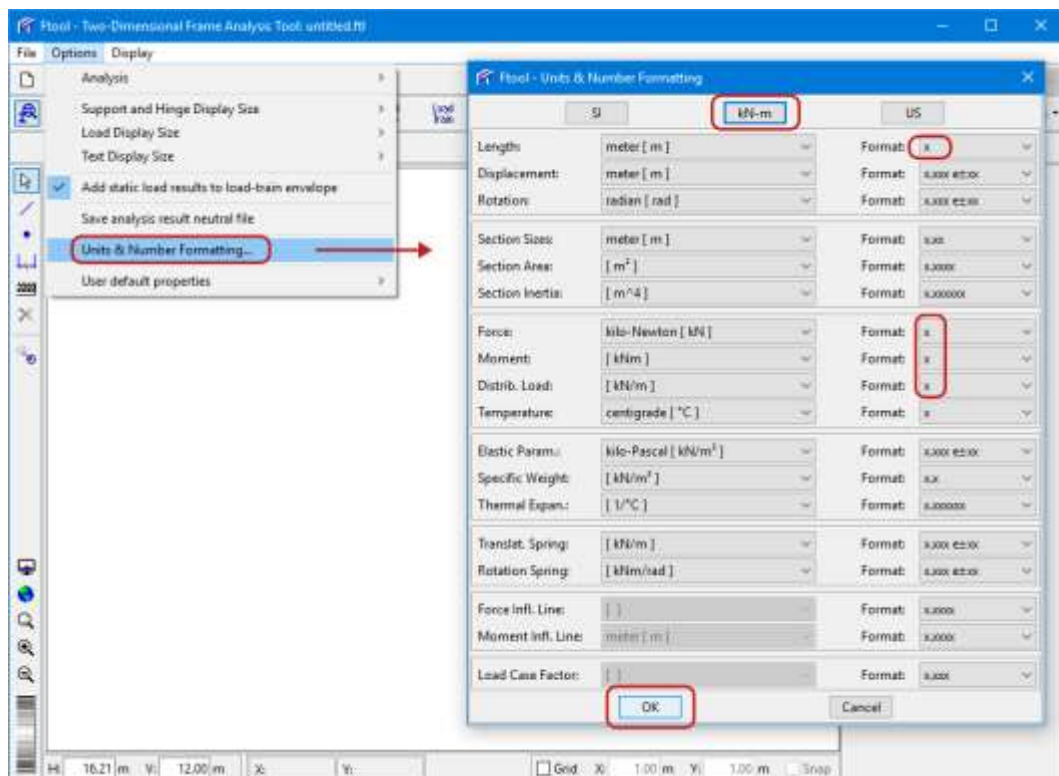
Create a file for the bridge model (command "Save as... ")	3
Specification of units and number formatting	3
Insertion of bridge beam in keyboard mode	4
Cancel member insertion to fit model image on screen	4
Fit image of model on screen	5
Insertion of first bridge column in keyboard mode	5
Insertion of second bridge column in keyboard mode	6
Insertion of third bridge column in keyboard mode	6
Insertion of fourth bridge column in keyboard mode	7
Cancel insertion of members	7
Leave keyboard mode and select area for zooming in	8
Mouse clicks for insertion of dimension line at bridge central span	8
Dimension line at bridge central span	9
Insertion of other dimension lines	9
Turn off display of dimension lines to simplify image	10
Creation of new material	10
Selection of material type and name; and assignment to all members	11
Creation of cross-section for bridge columns	11
Select rectangular cross-section for the bridge columns	12
Specify rectangular cross-section parameters and apply to bridge columns	12
Creation of cross-section for bridge beam members	13
Select type and name of cross-section for bridge beam members	13
Specify cross-section parameters and apply to bridge beam members	14
Definition of fixed support and assignment to inferior nodes	14
Definition of simple support and assignment to beam end nodes	15
Creation of uniformly distributed load (dead load) for bridge beam	15
Definition of dead load value and assignment to beam members	16
Select small display size for supports	16
Select small display size for loads	17
Specification of two vehicle live loads (load-trains)	17
Creation of highway load-train with four axes	18
Specification of highway load-train length, values of concentrated forces, and values of interior and exterior live loads (population of small vehicles)	18
Creation of railroad load-train	19
Specification of railroad load-train length, values of concentrated forces, and values of full and empty car distributed loads	19
Select result visualization step (2 m) and set transversal display of result values	20
Select cross-section for visualization of shear force influence line result	20
Visualization of shear force influence line result and critical positions (that cause minimum and maximum) of highway load-train	21
Visualization of bending moment influence line result and critical positions (that cause minimum and maximum) of highway load-train	21
Visualization of axial force influence line result and critical positions (that cause minimum and maximum) of railroad load-train	22
Visualization of shear force envelopes for highway load-train (including effect of permanent load)	22
Visualization of bending moment envelopes for railroad load-train (including effect of permanent load)	23
Visualization of bending moment envelopes for railroad load-train (excluding effect of permanent load)	23
Consulting step results values along central beam member of bending moment envelopes for railroad load-train (excluding effect of permanent load)	24



Create a file for the bridge model (command "Save as... ")

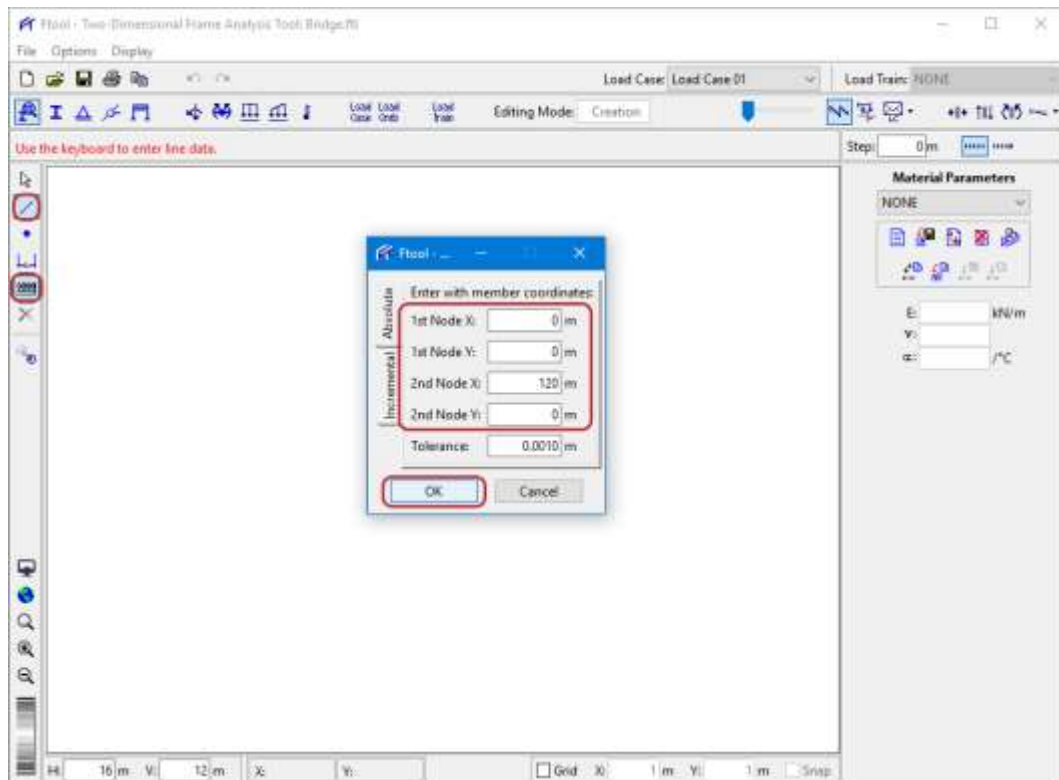


Specification of units and number formatting

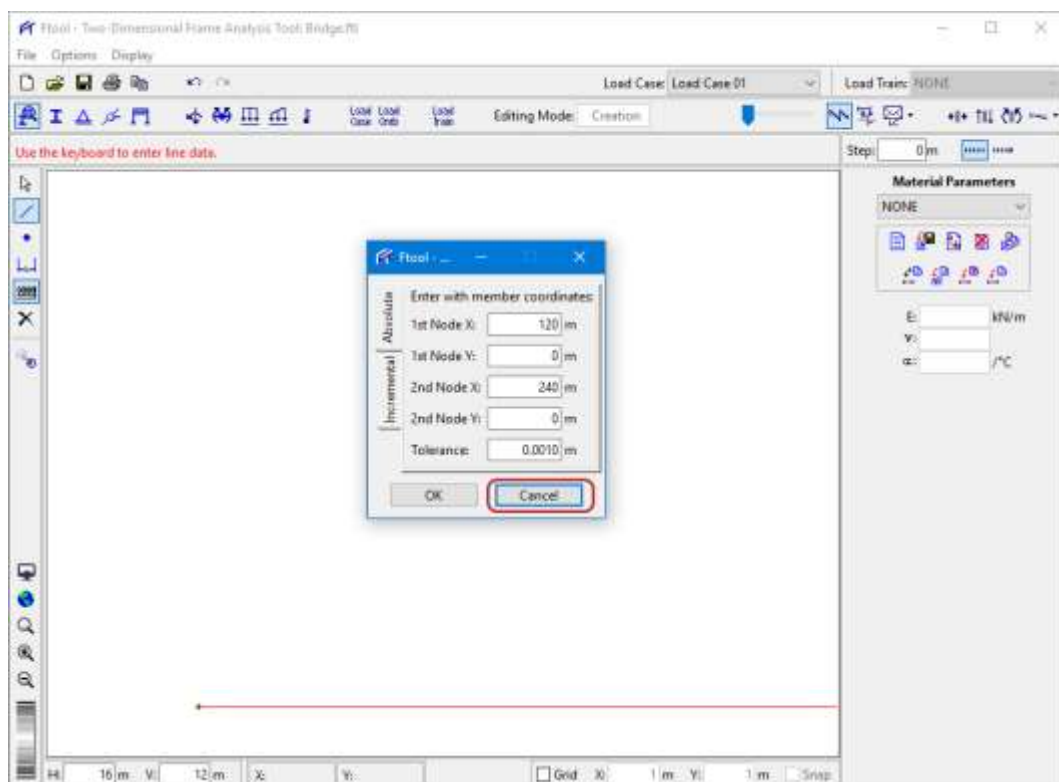




Insertion of bridge beam in keyboard mode

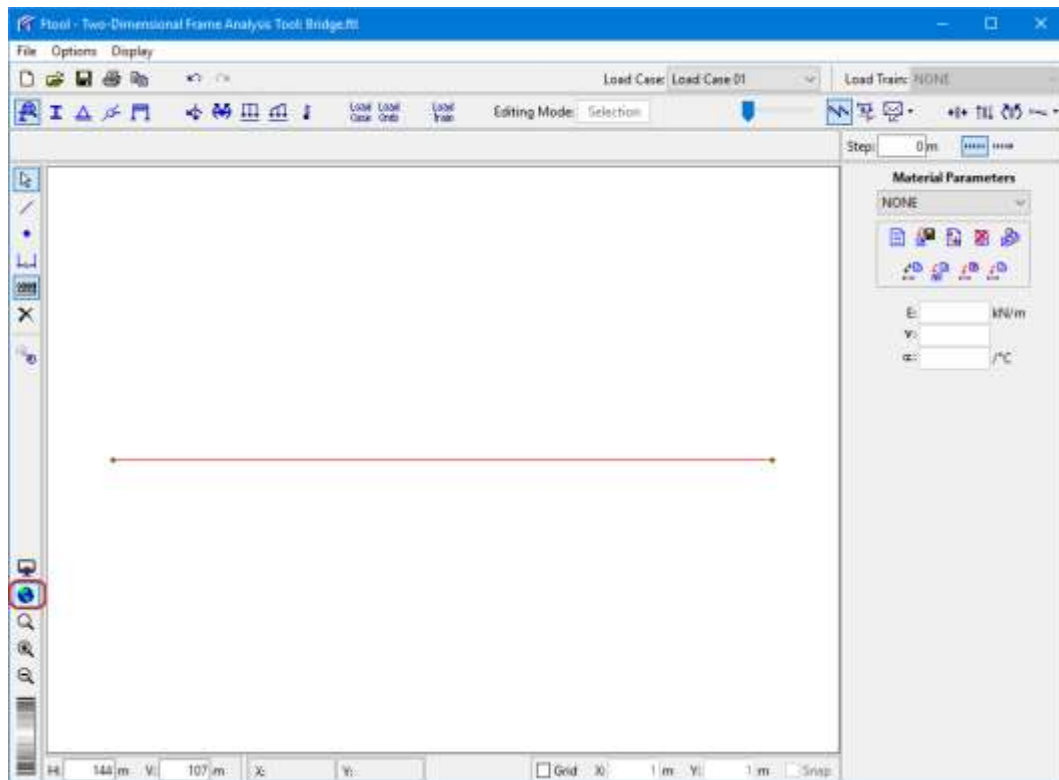


Cancel member insertion to fit model image on screen

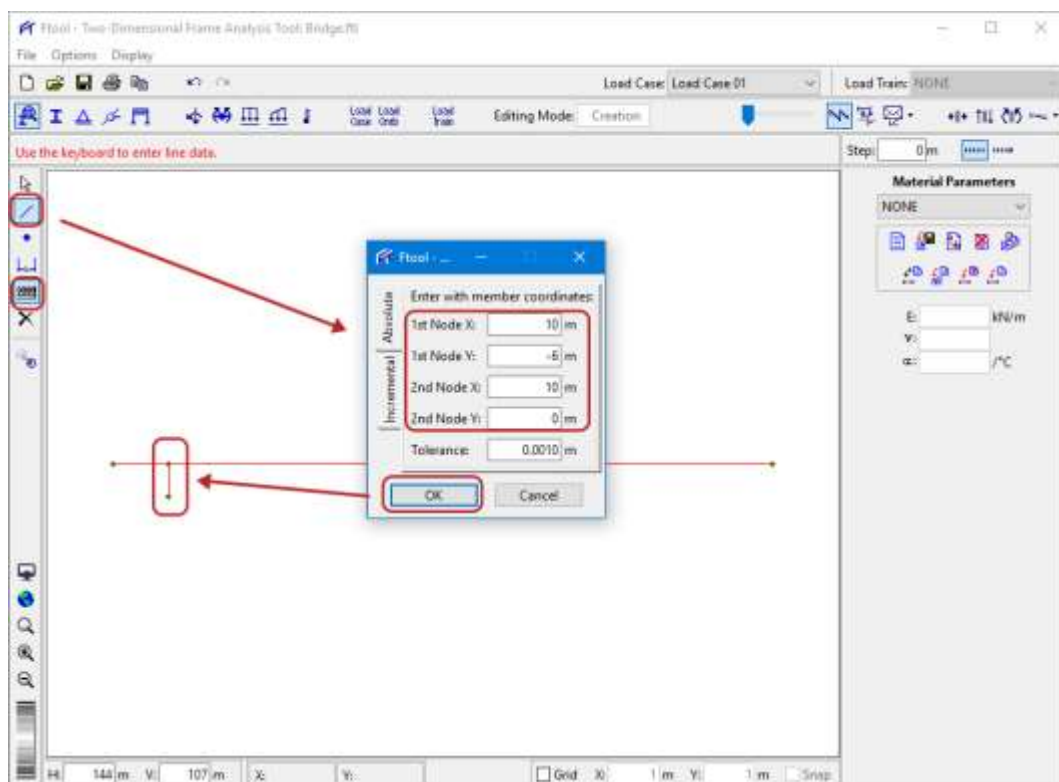




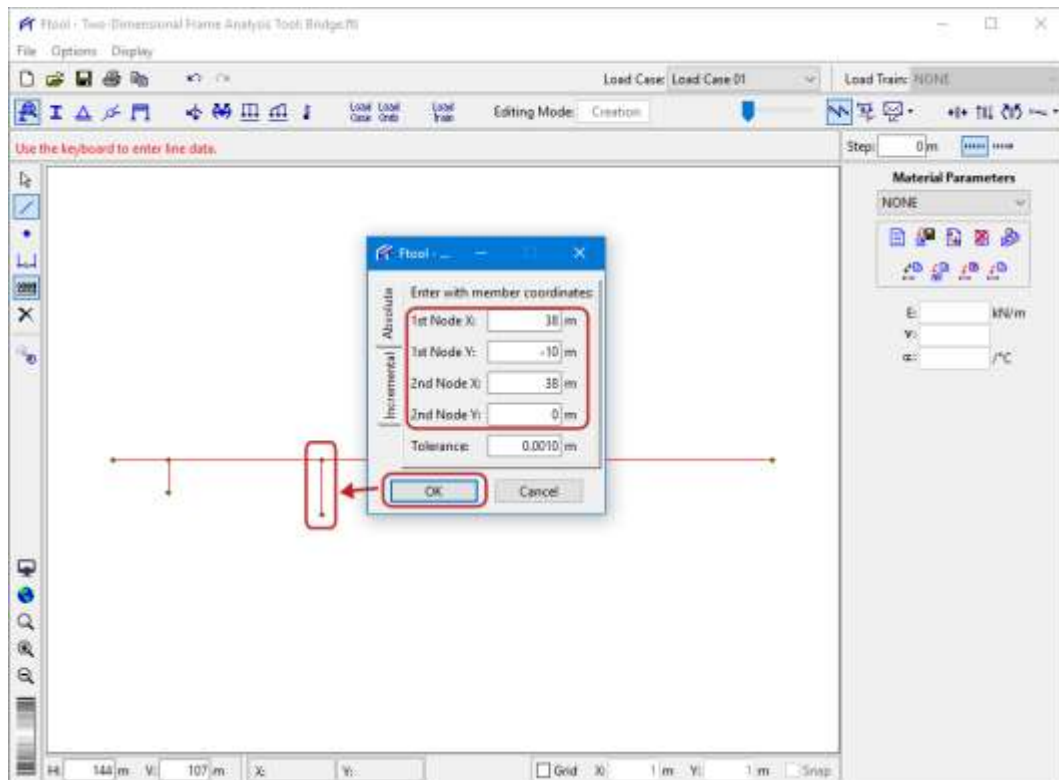
Fit image of model on screen



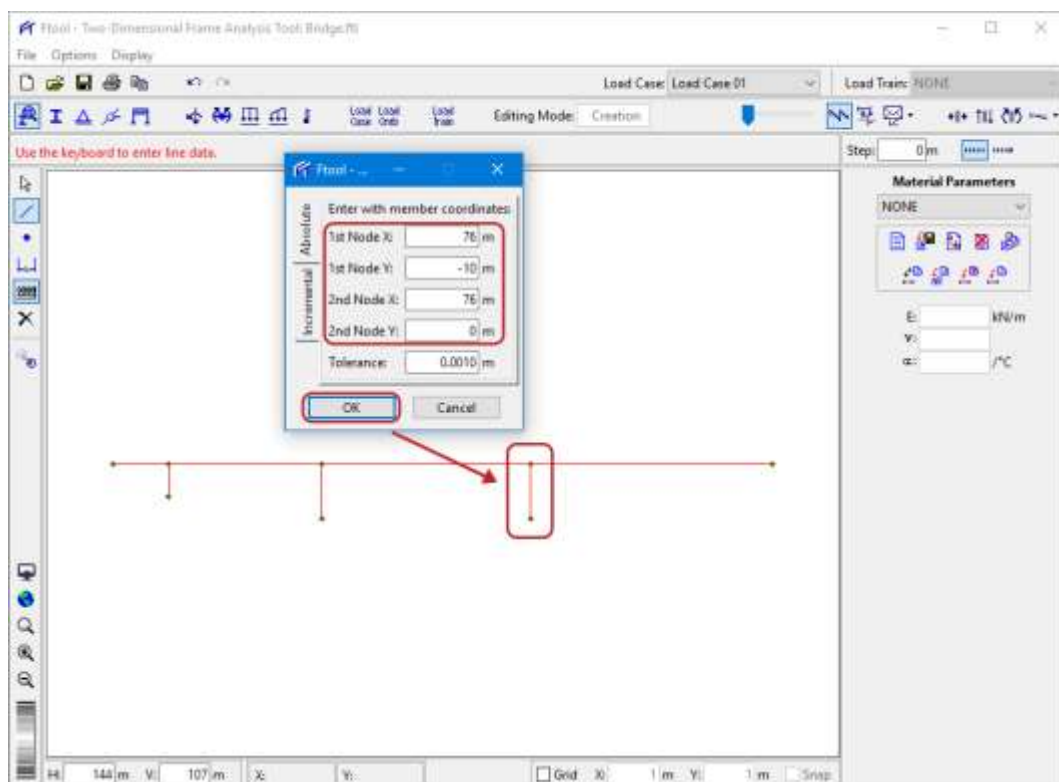
Insertion of first bridge column in keyboard mode



Insertion of second bridge column in keyboard mode

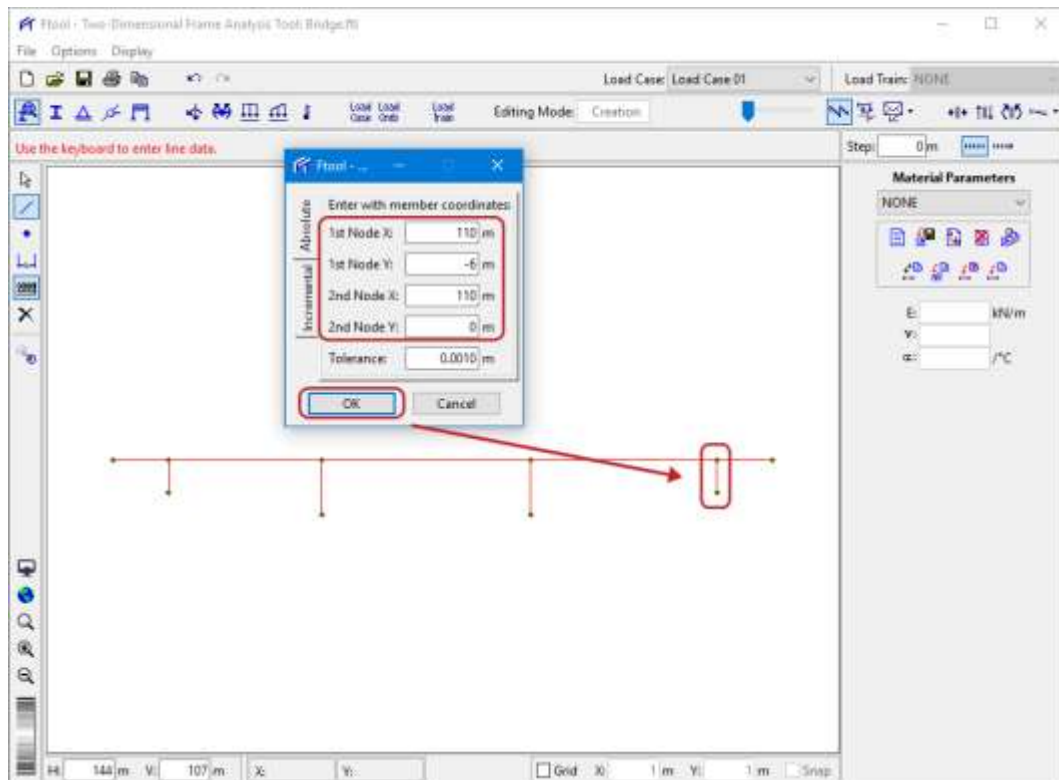


Insertion of third bridge column in keyboard mode

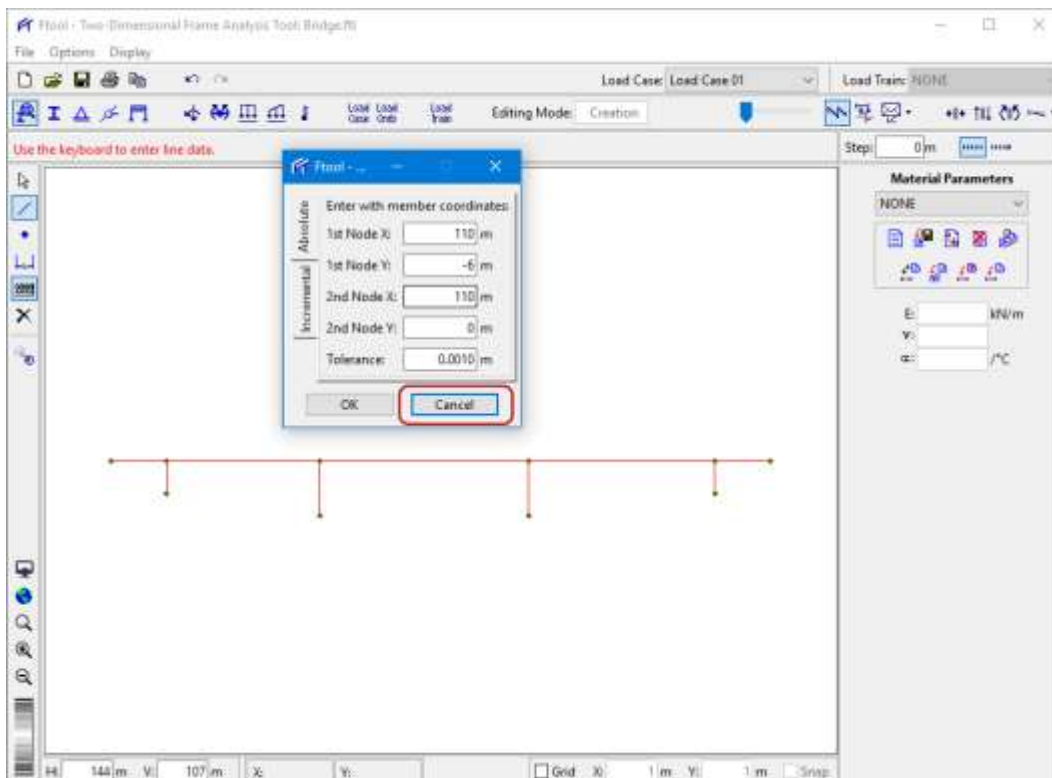




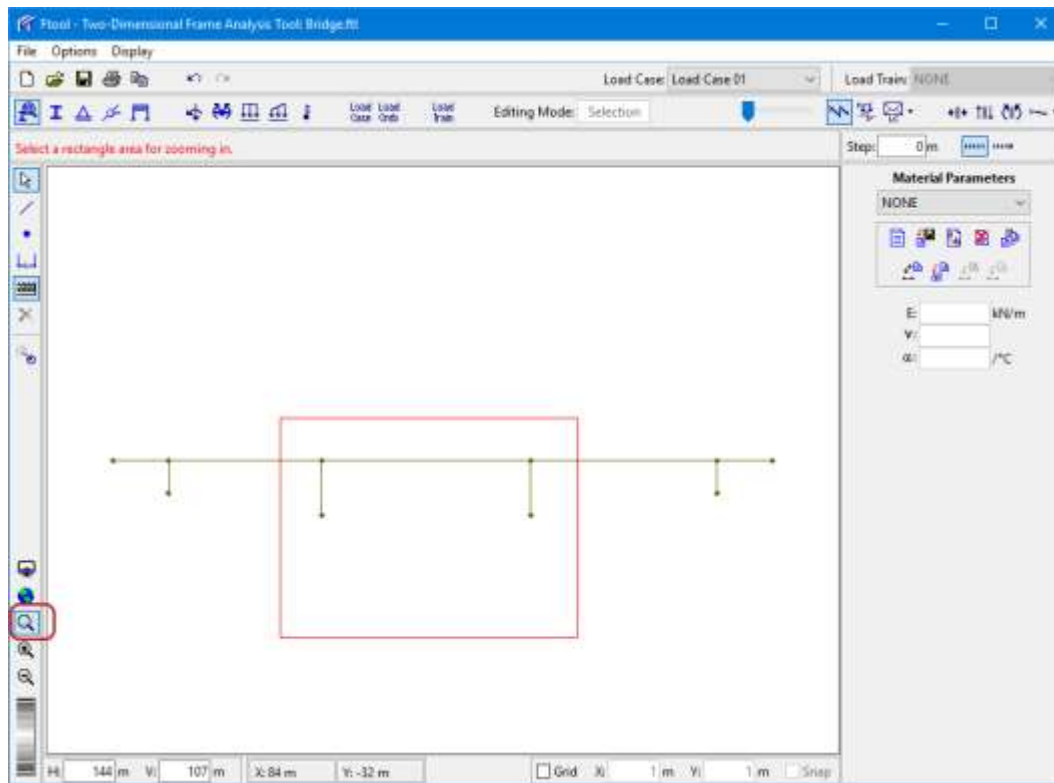
Insertion of fourth bridge column in keyboard mode



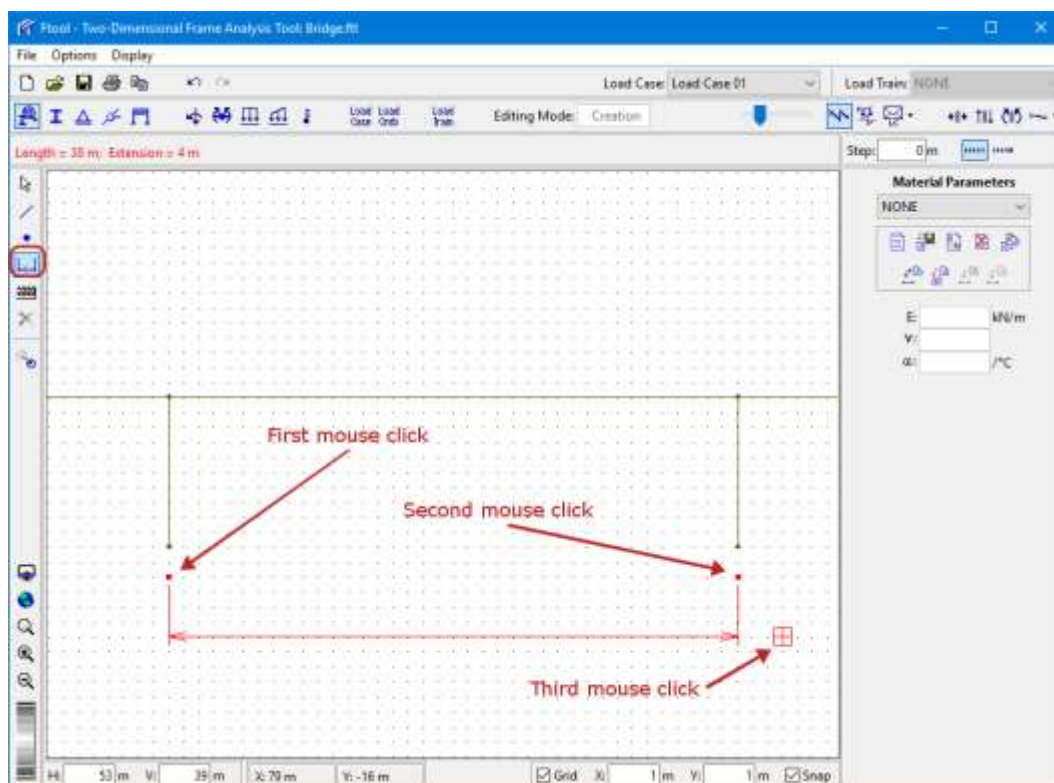
Cancel insertion of members



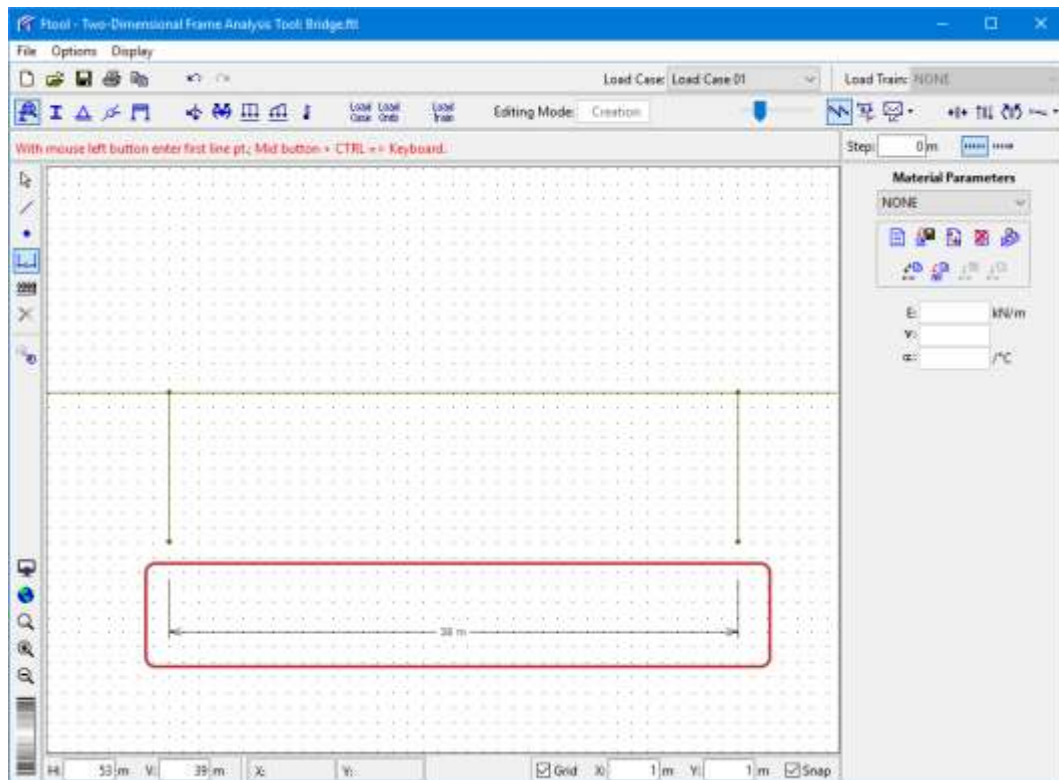
Leave keyboard mode and select area for zooming in



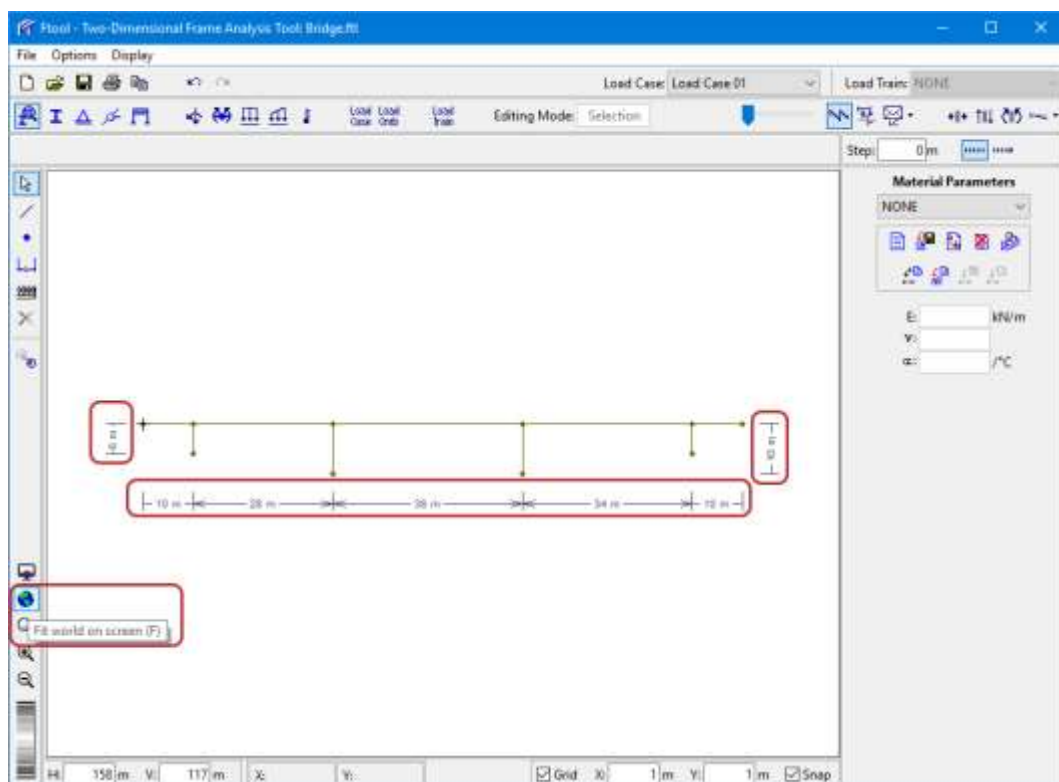
Mouse clicks for insertion of dimension line at bridge central span



Dimension line at bridge central span

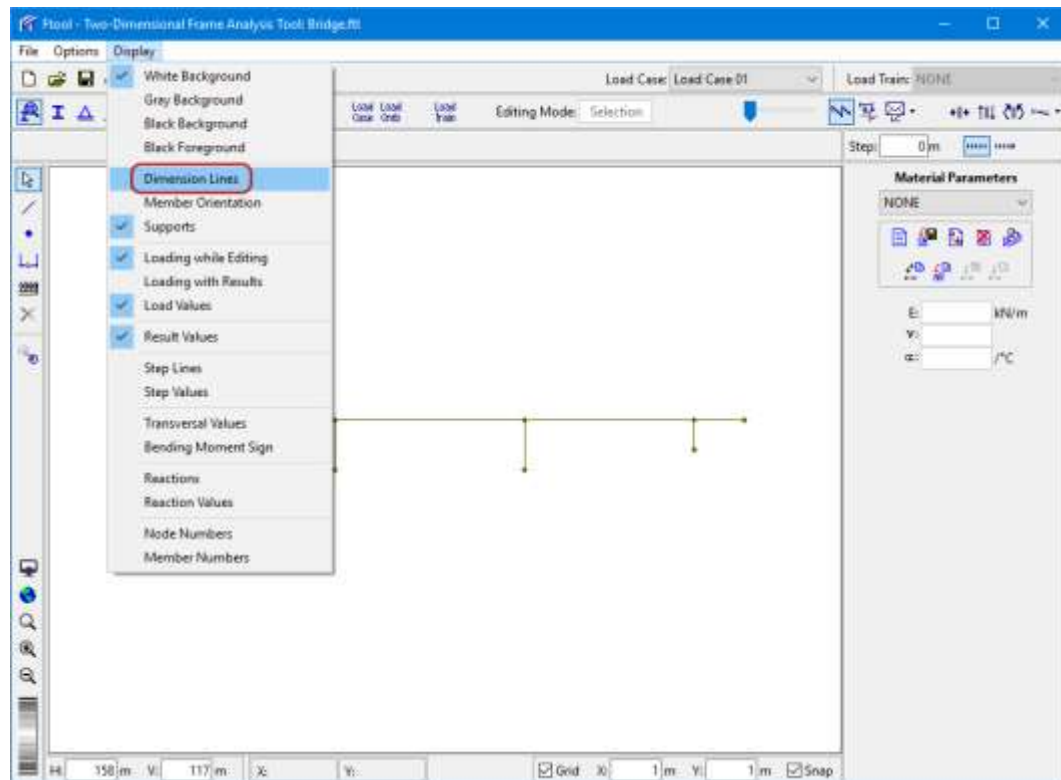


Insertion of other dimension lines

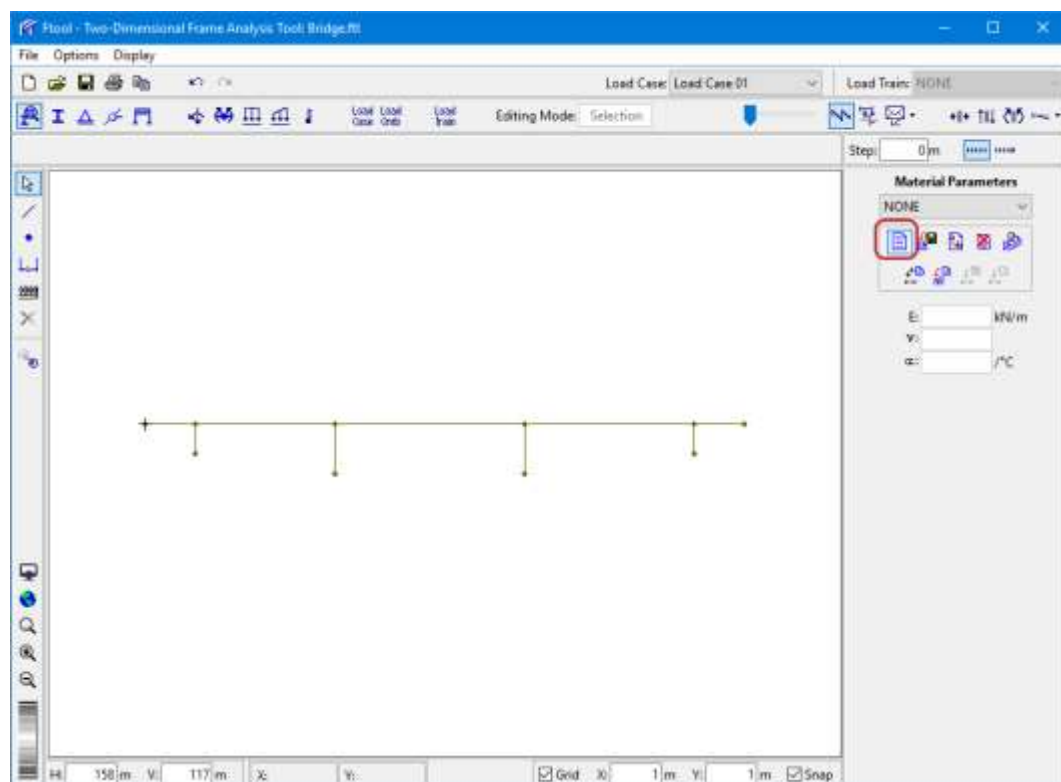




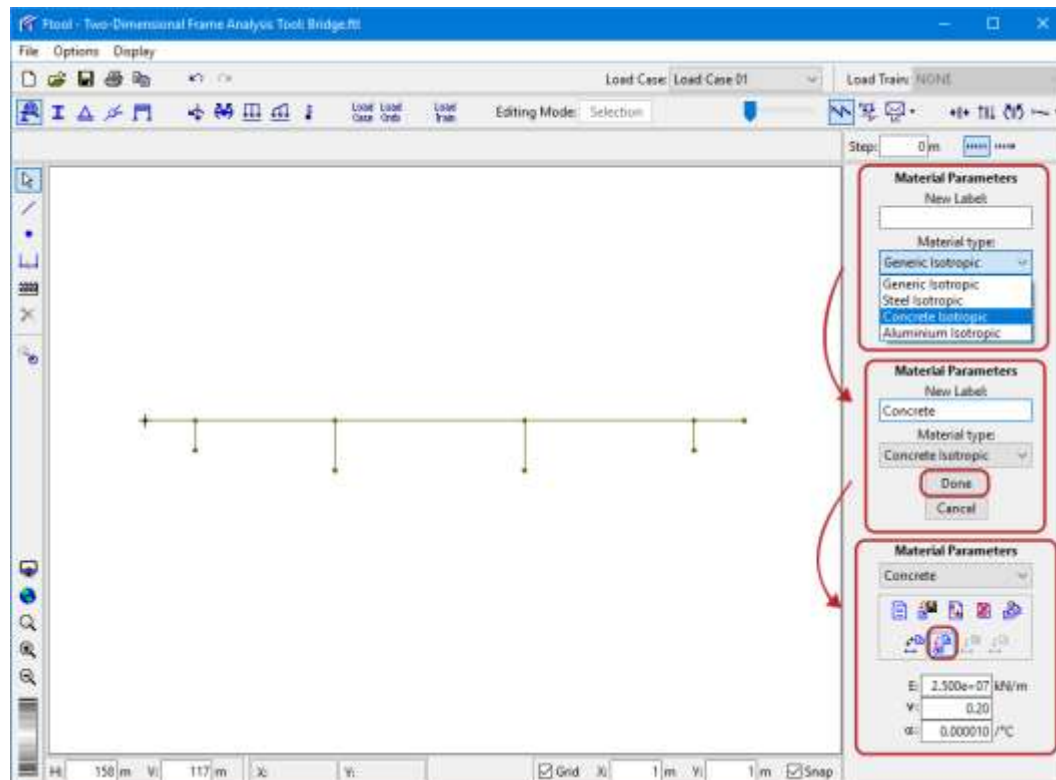
Turn off display of dimension lines to simplify image



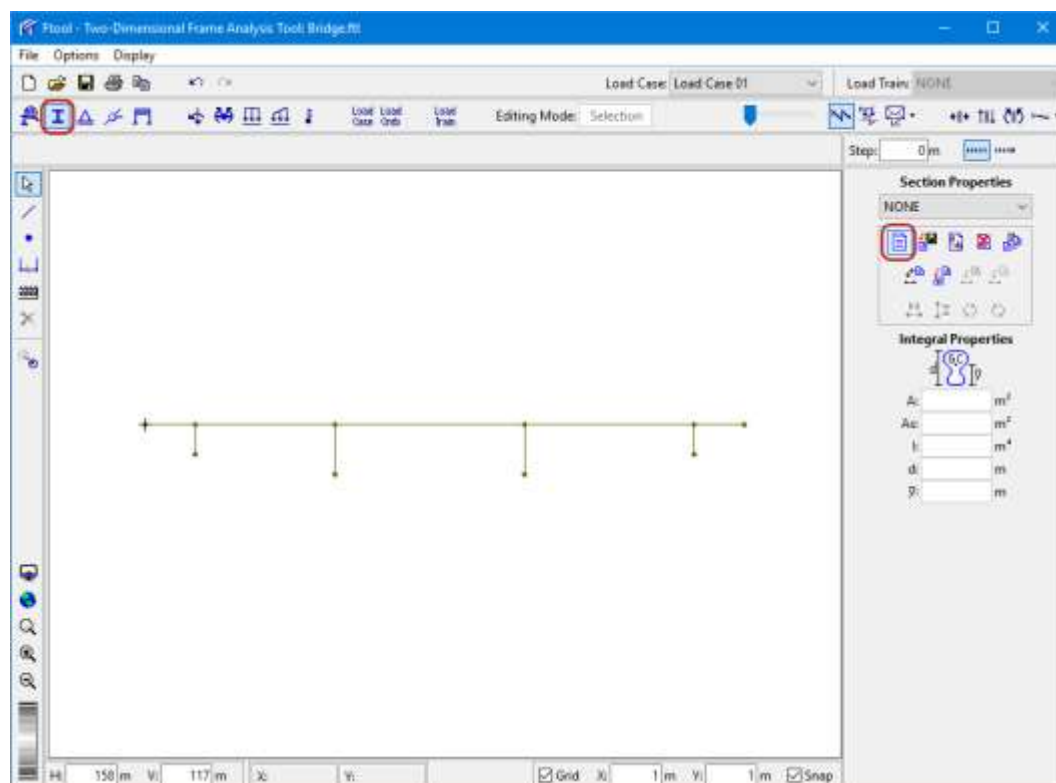
Creation of new material



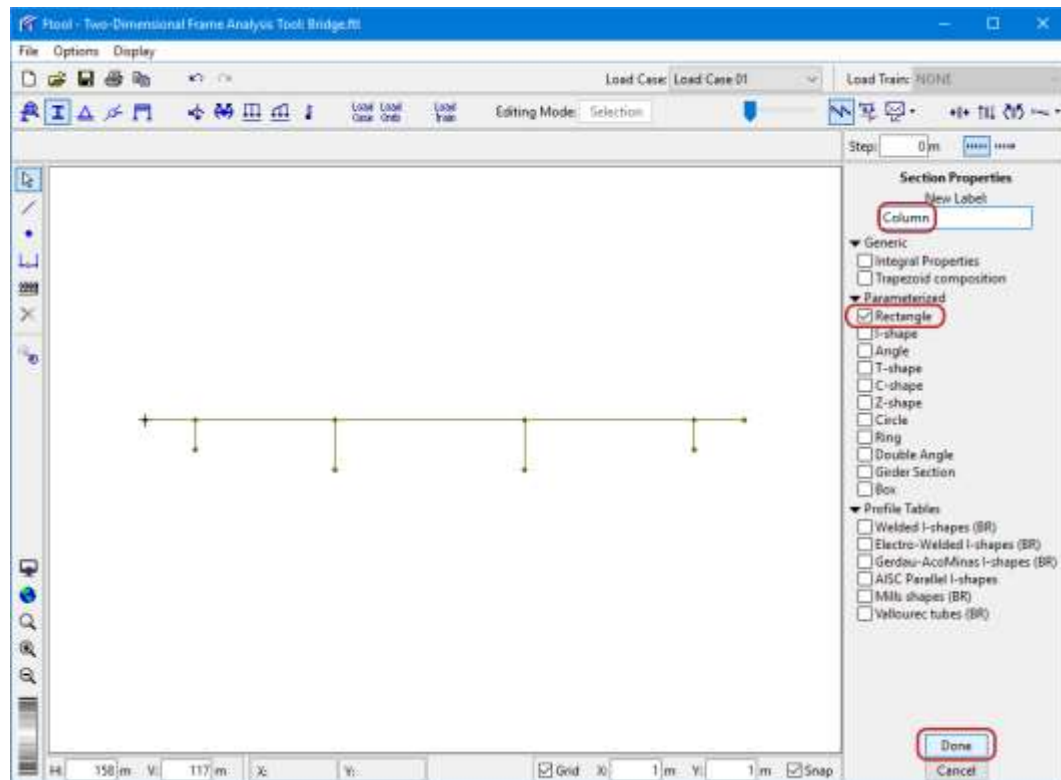
Selection of material type and name; and assignment to all members



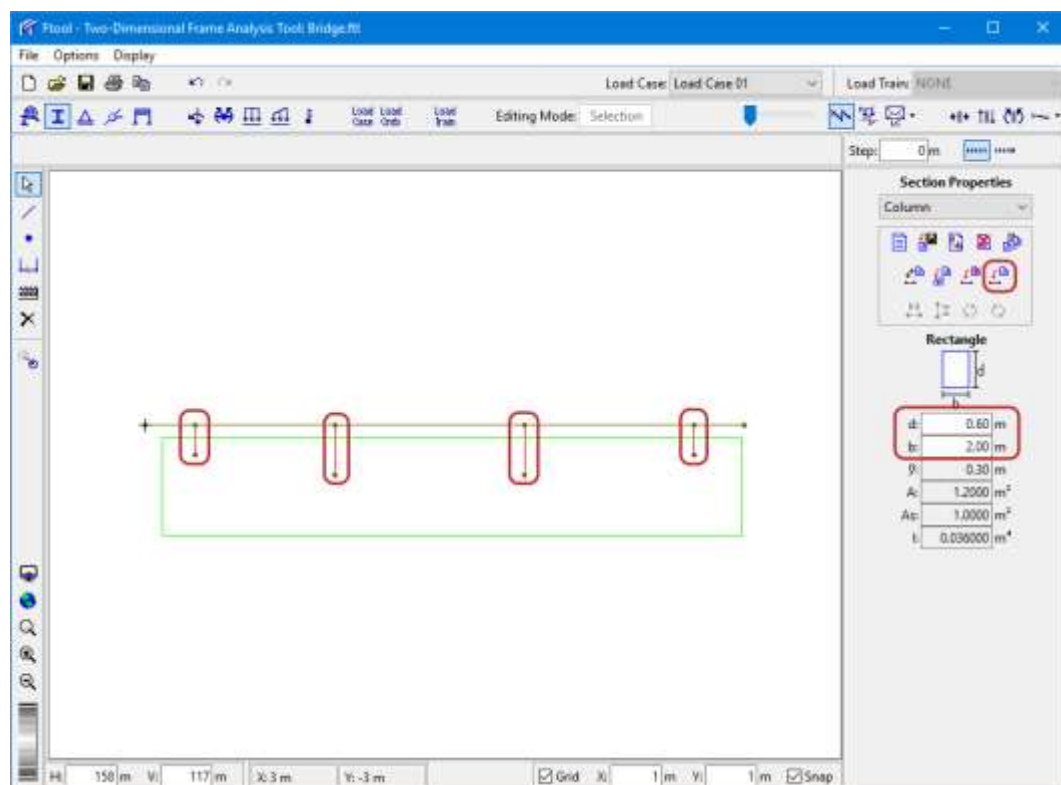
Creation of cross-section for bridge columns



Select rectangular cross-section for the bridge columns

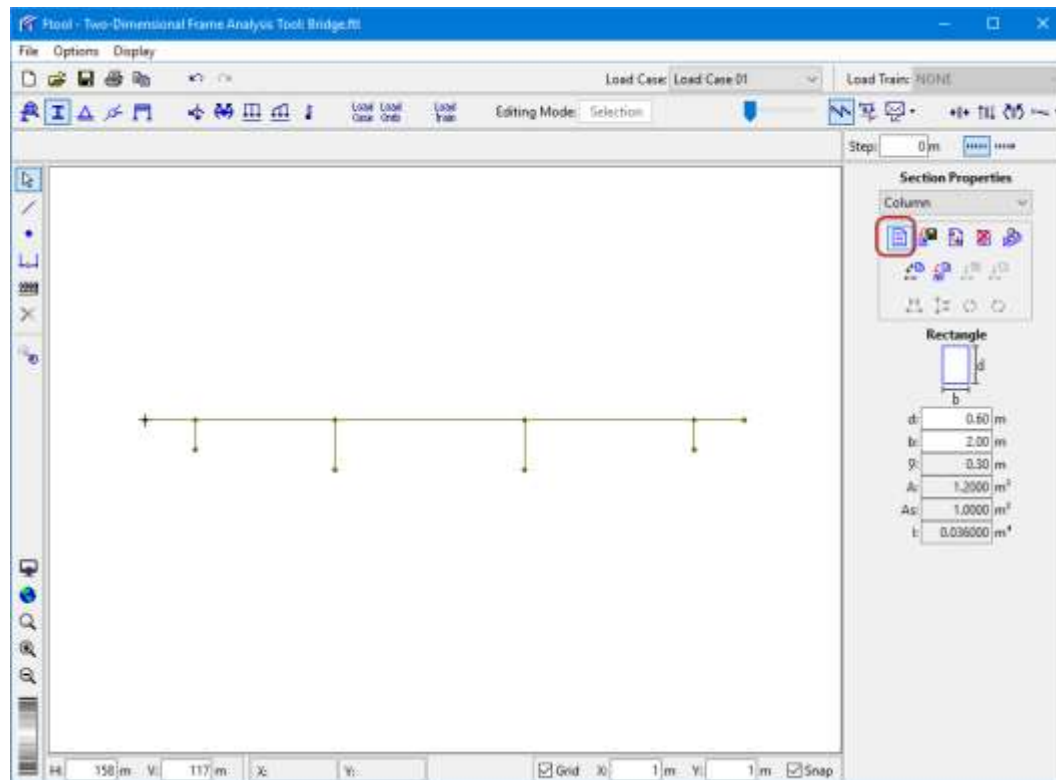


Specify rectangular cross-section parameters and apply to bridge columns

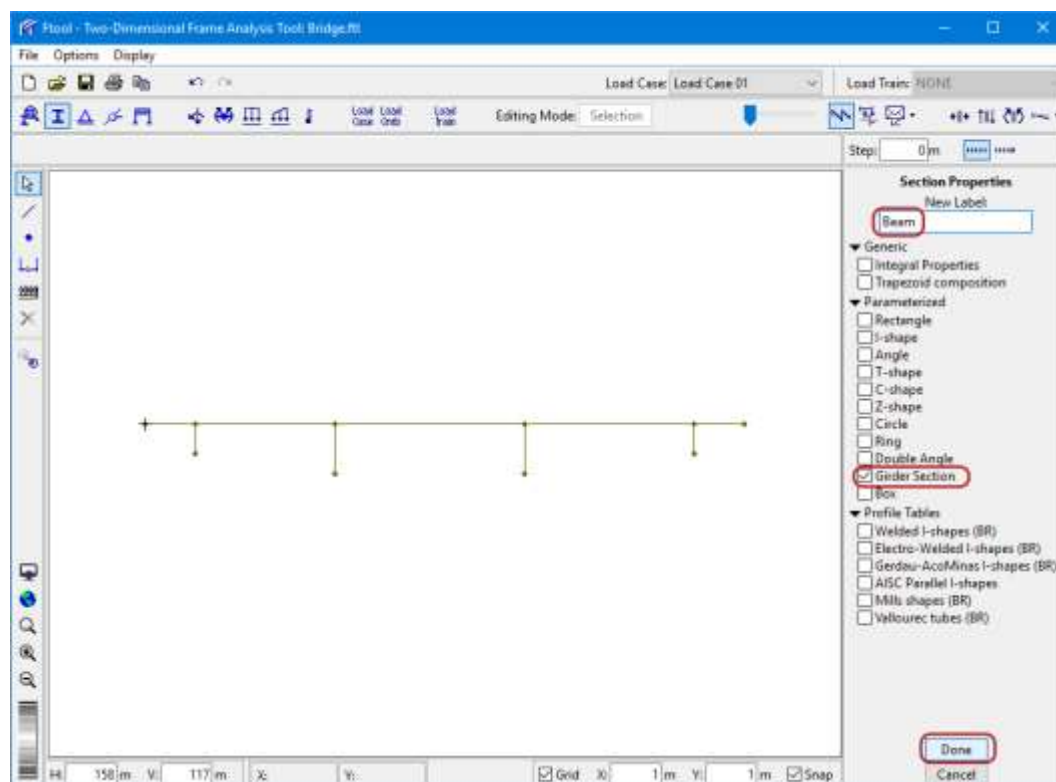




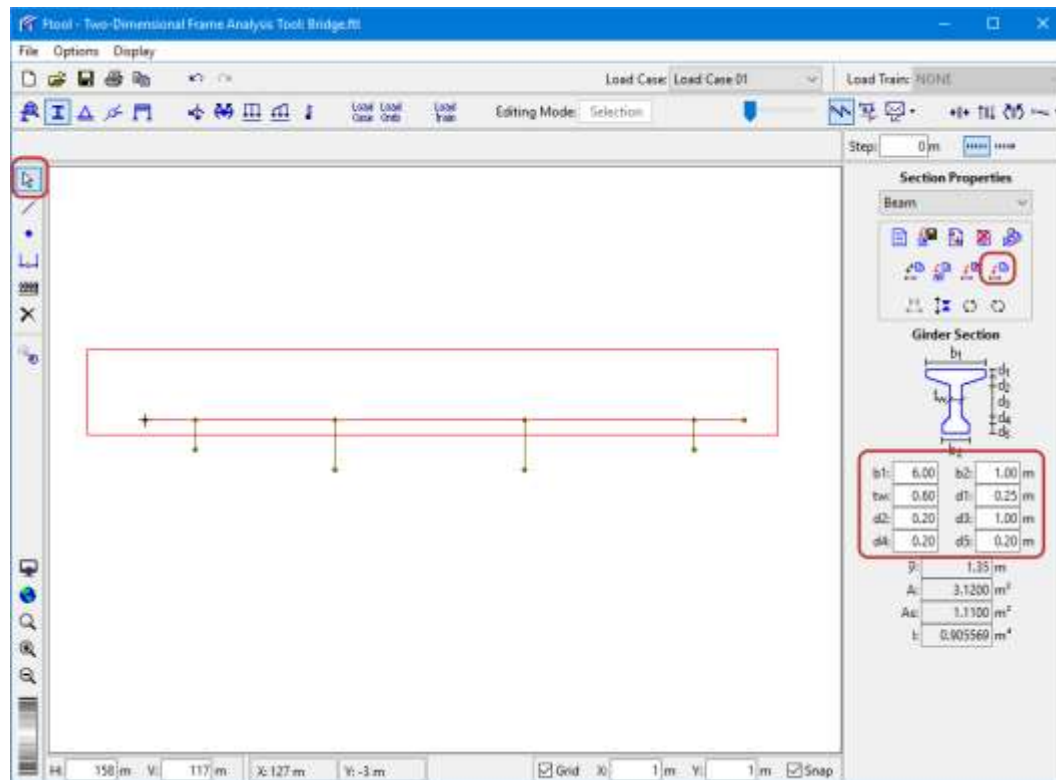
Creation of cross-section for bridge beam members



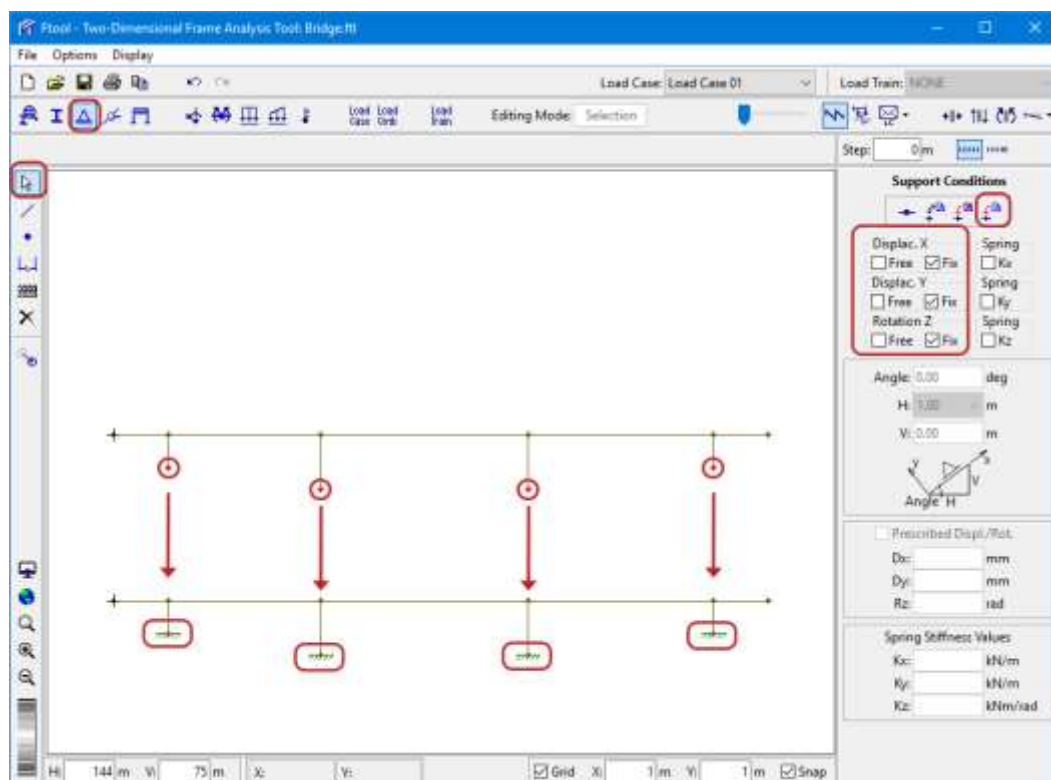
Select type and name of cross-section for bridge beam members



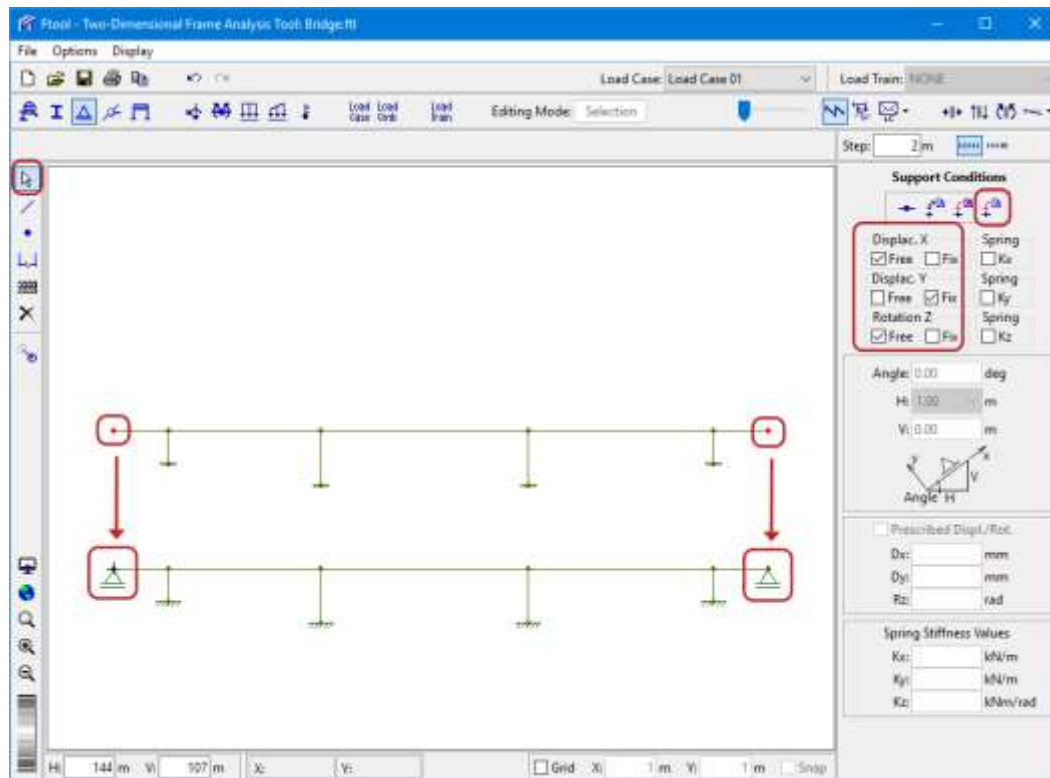
Specify cross-section parameters and apply to bridge beam members



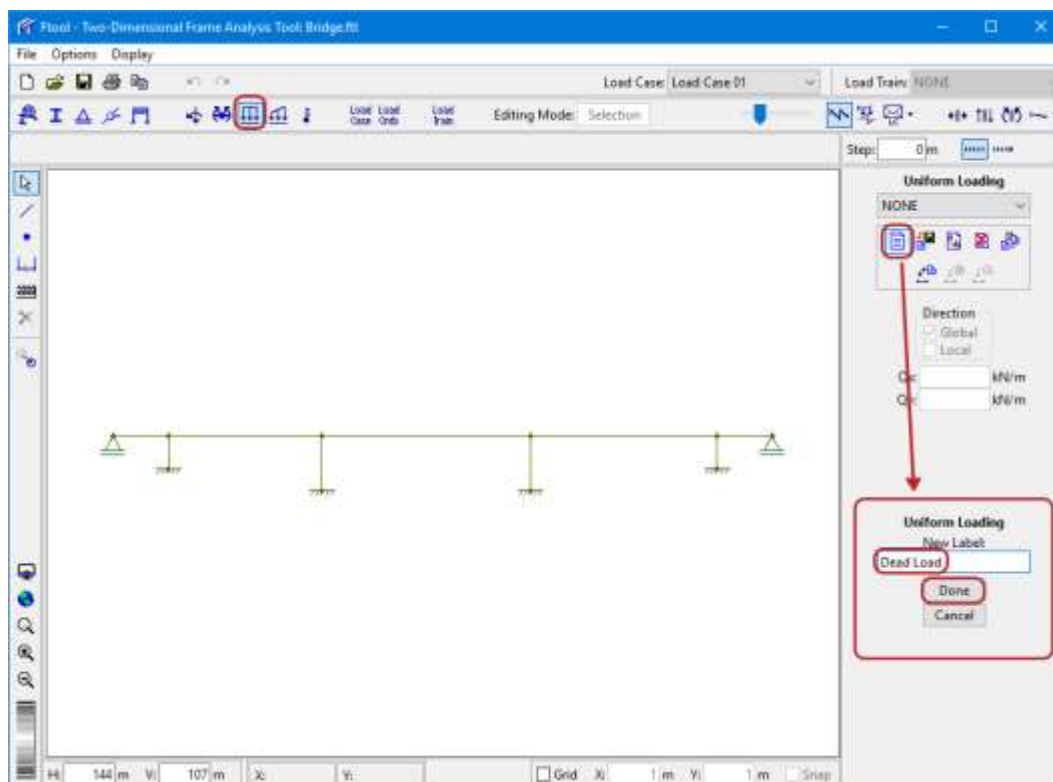
Definition of fixed support and assignment to inferior nodes



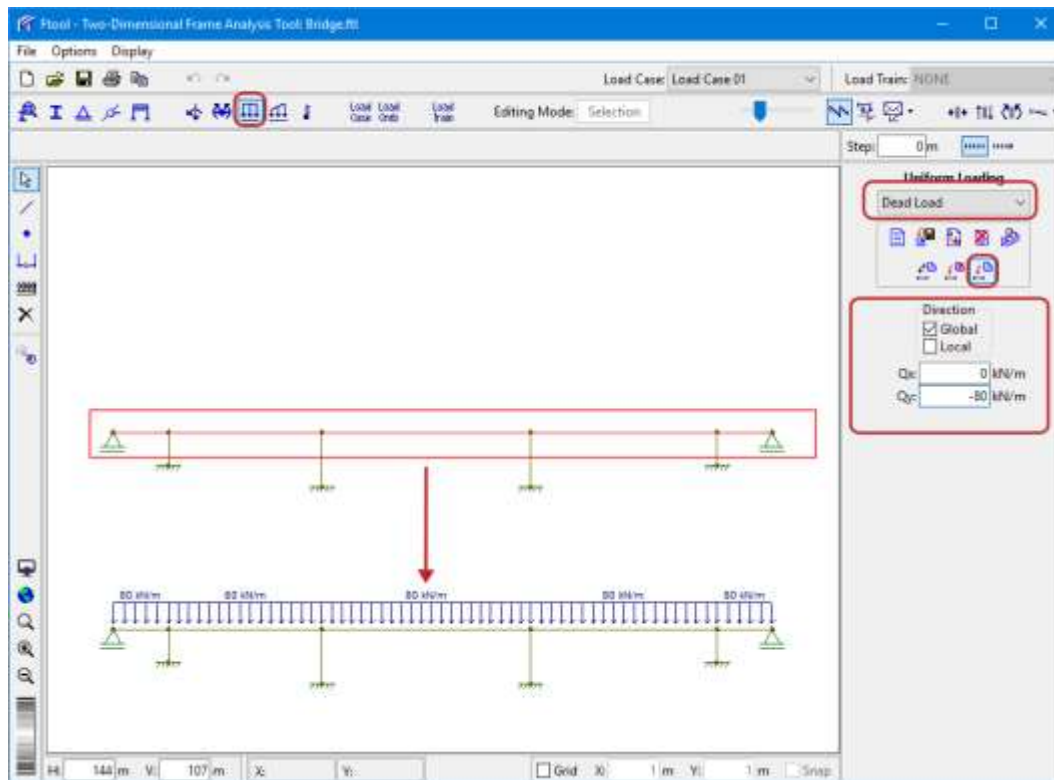
Definition of simple support and assignment to beam end nodes



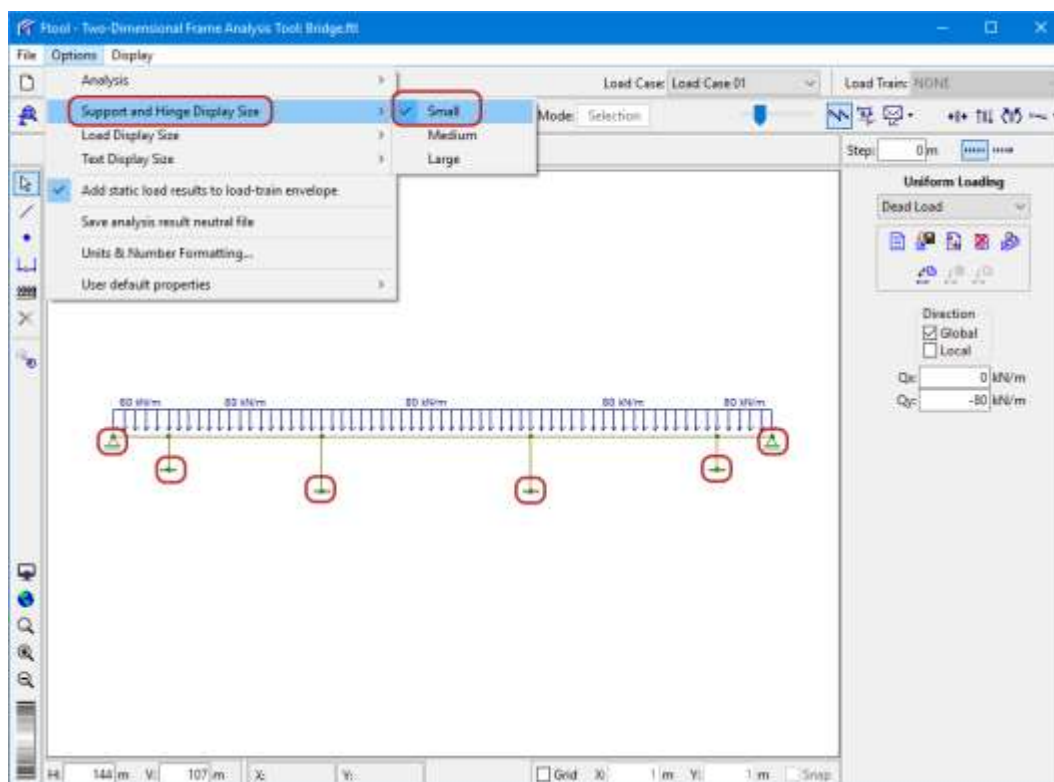
Creation of uniformly distributed load (dead load) for bridge beam



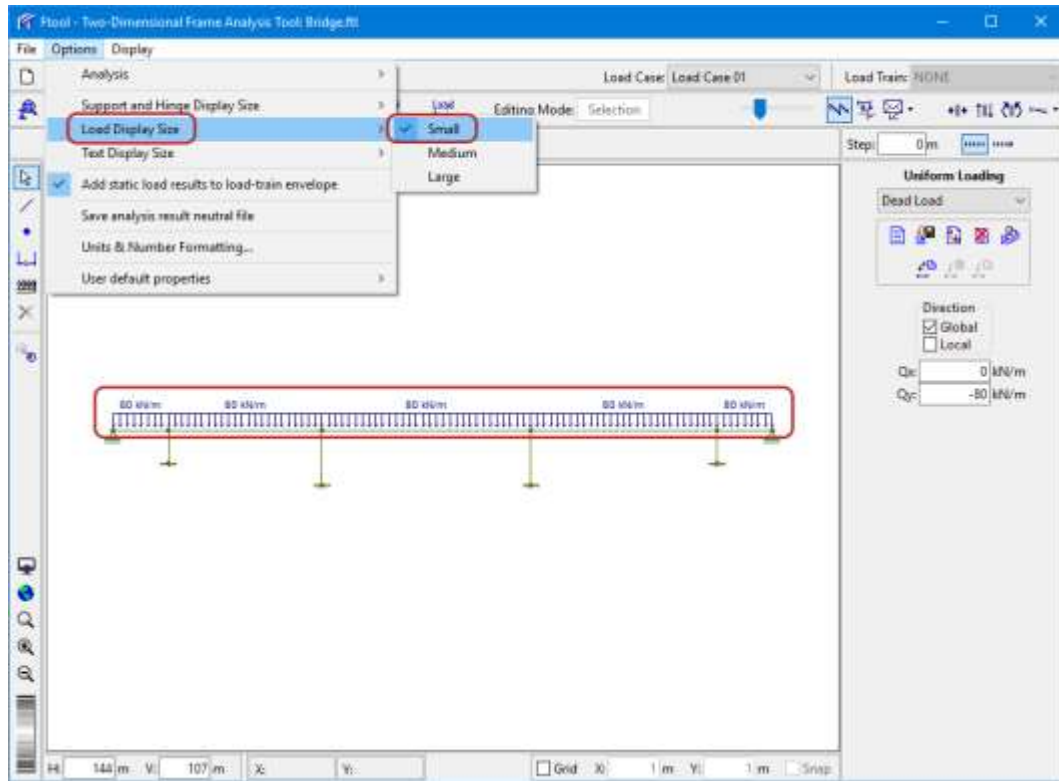
Definition of dead load value and assignment to beam members



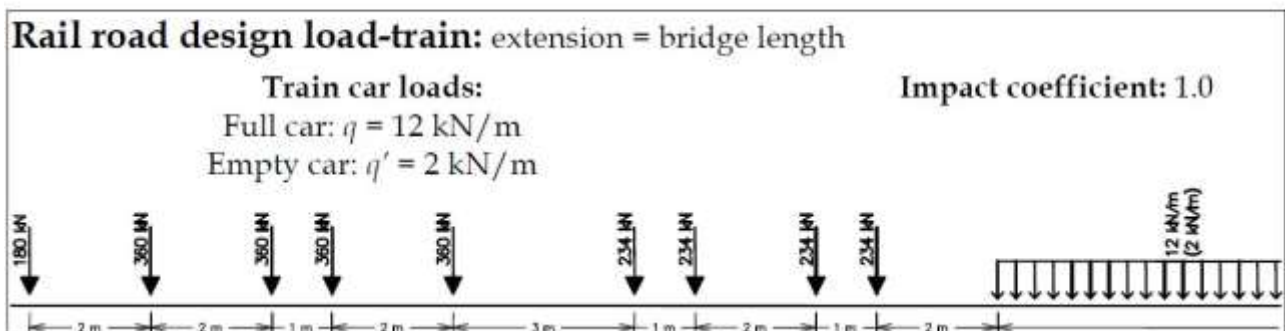
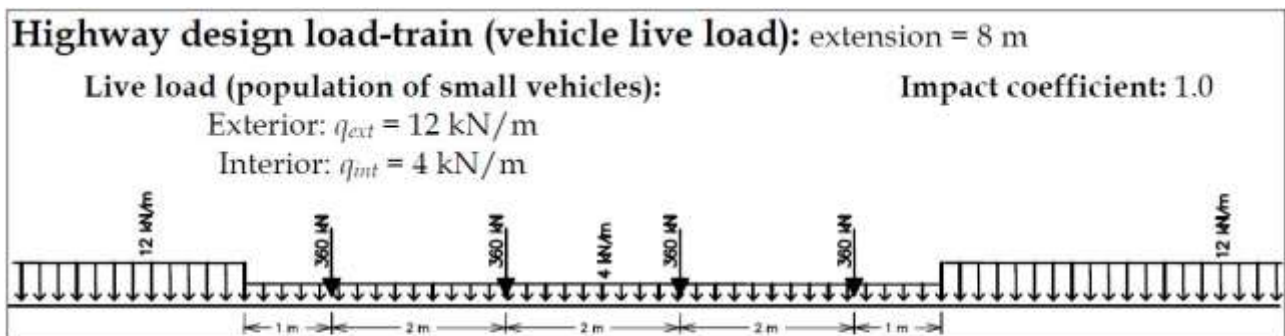
Select small display size for supports



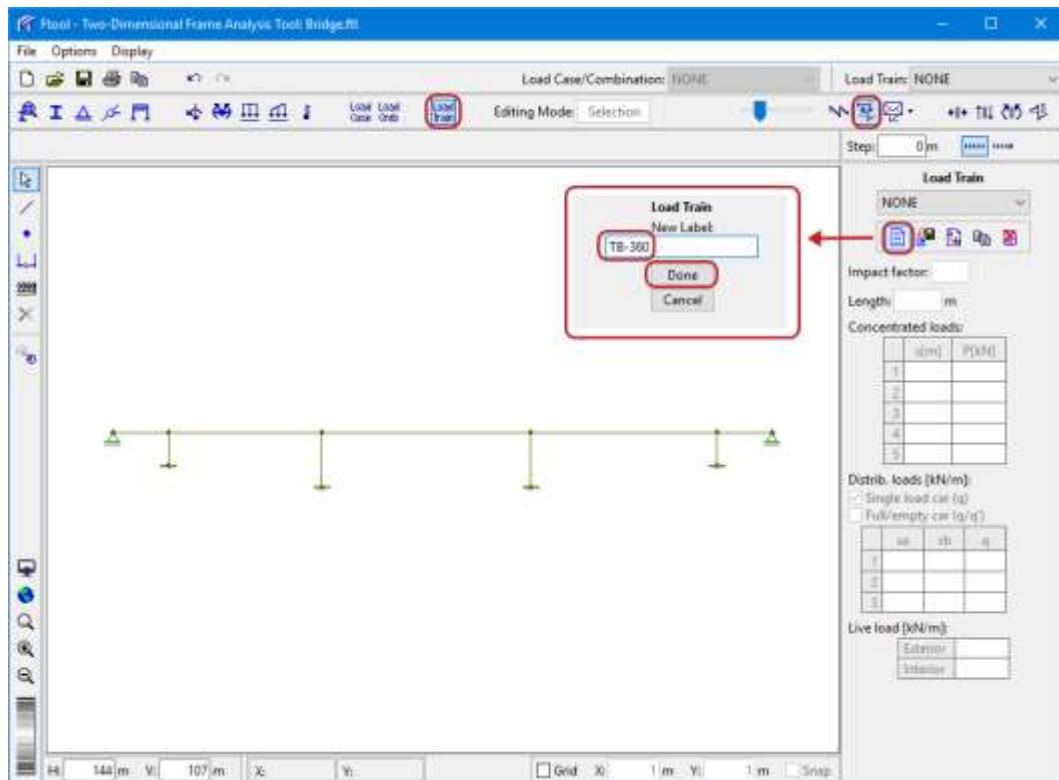
Select small display size for loads



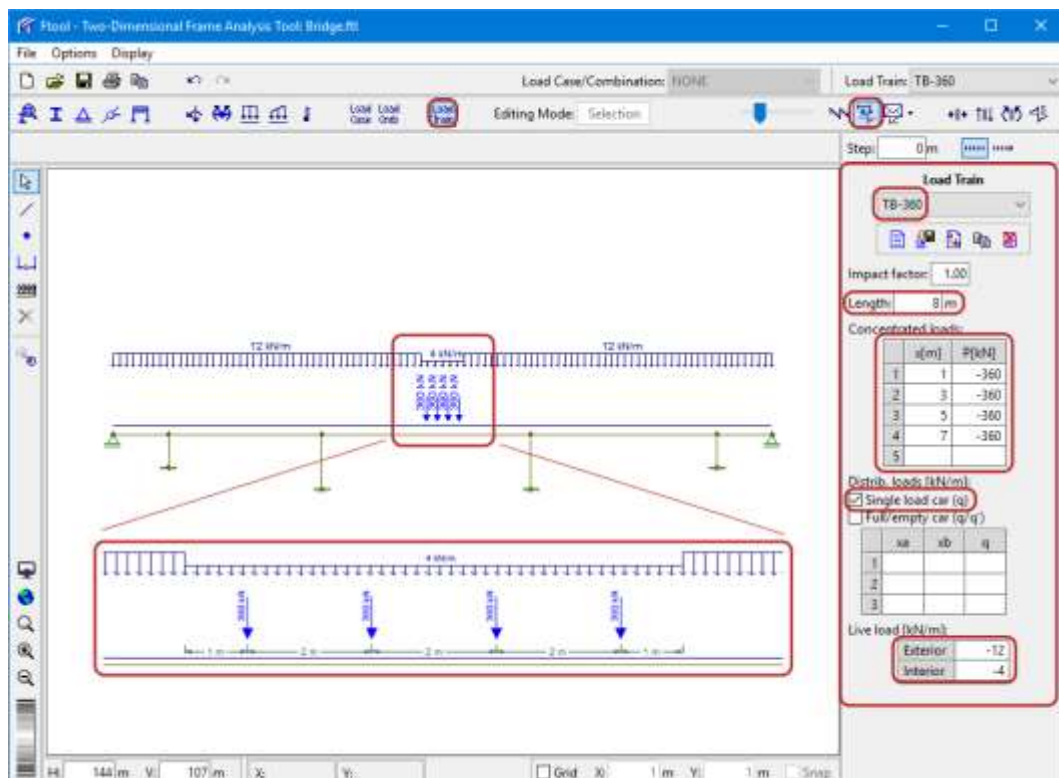
Specification of two vehicle live loads (load-trains)



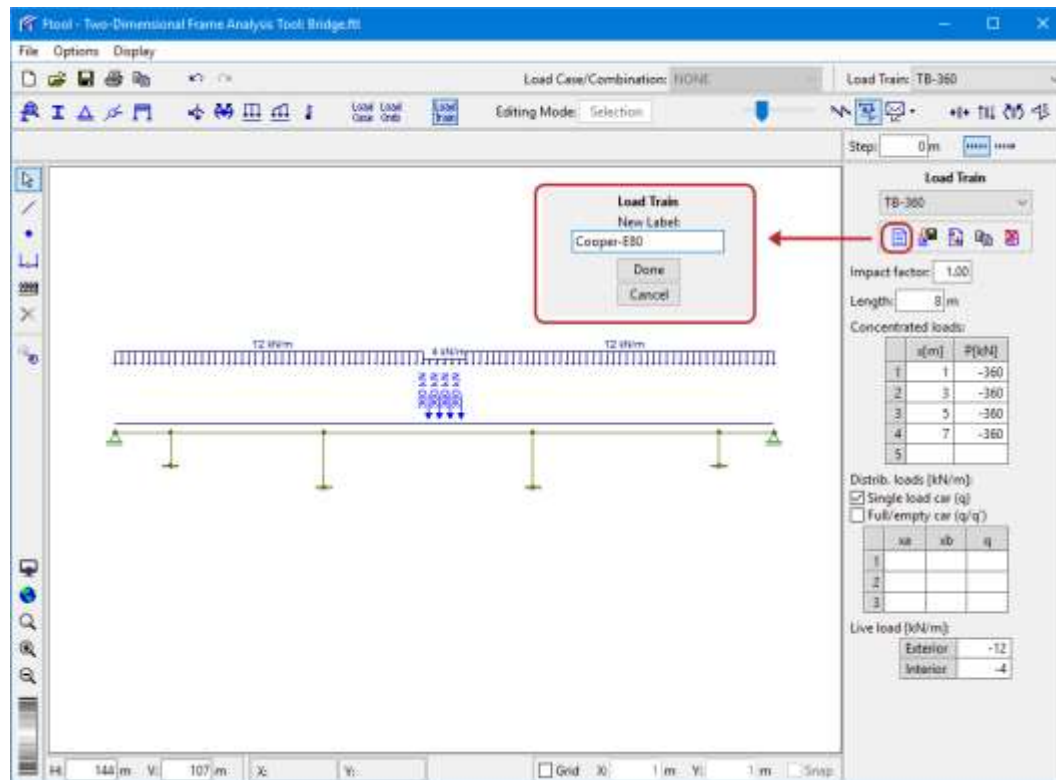
Creation of highway load-train with four axes



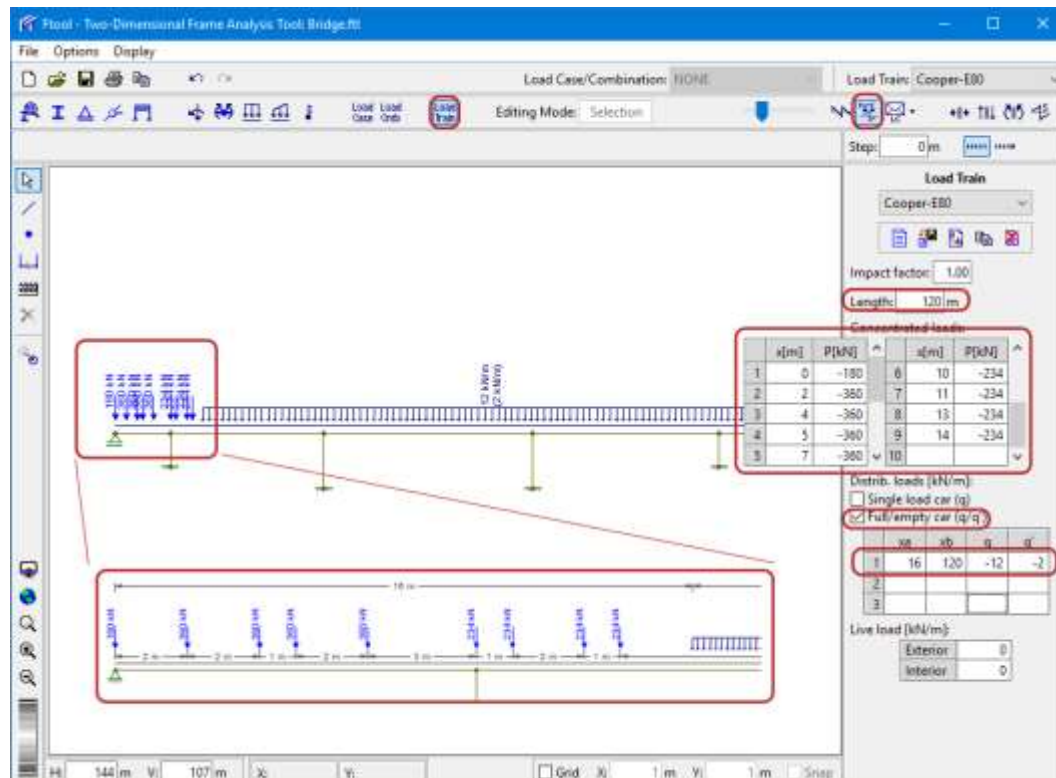
Specification of highway load-train length, values of concentrated forces, and values of interior and exterior live loads (population of small vehicles)



Creation of railroad load-train

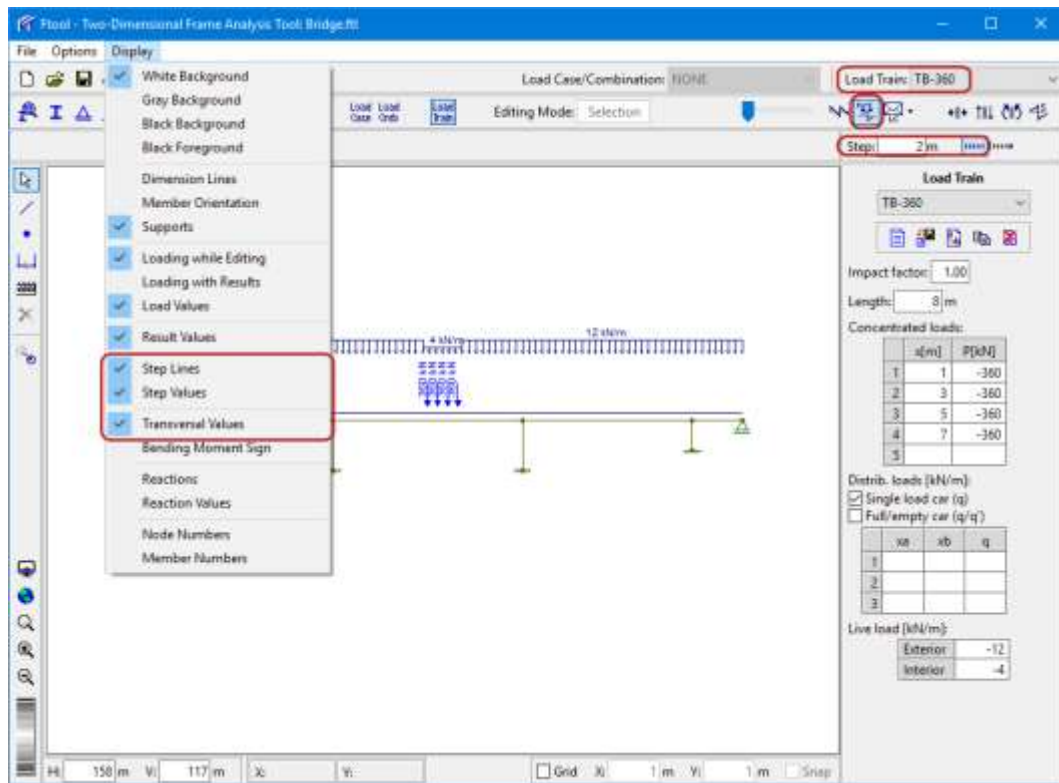


Specification of railroad load-train length, values of concentrated forces, and values of full and empty car distributed loads

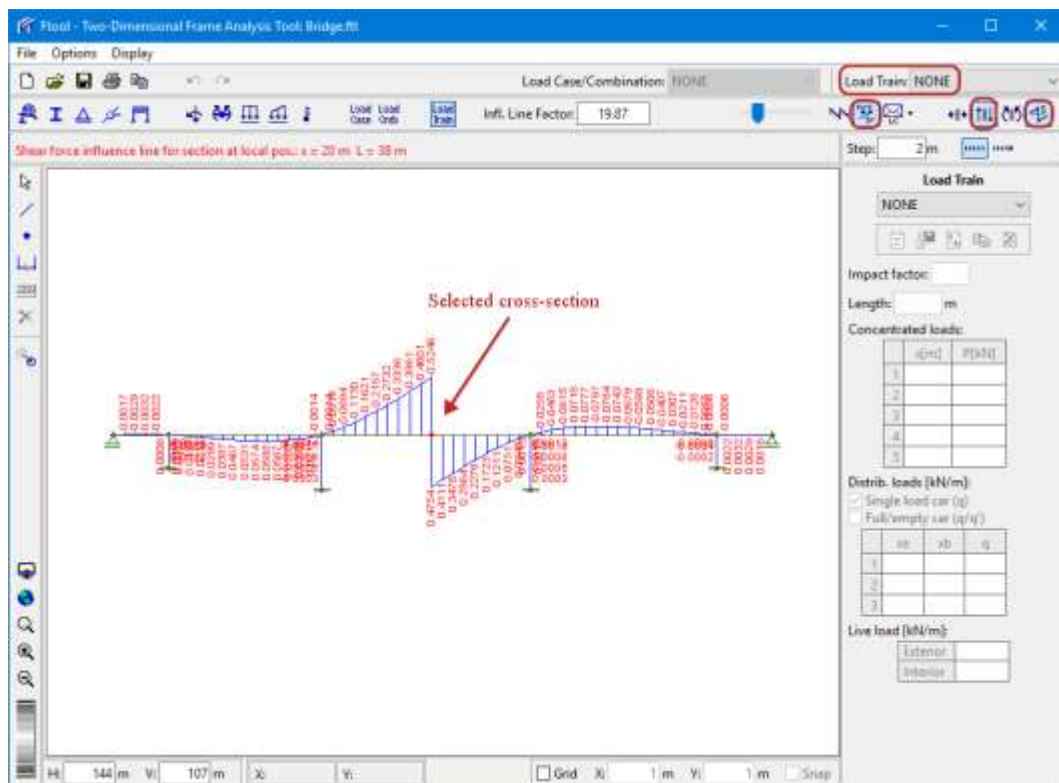




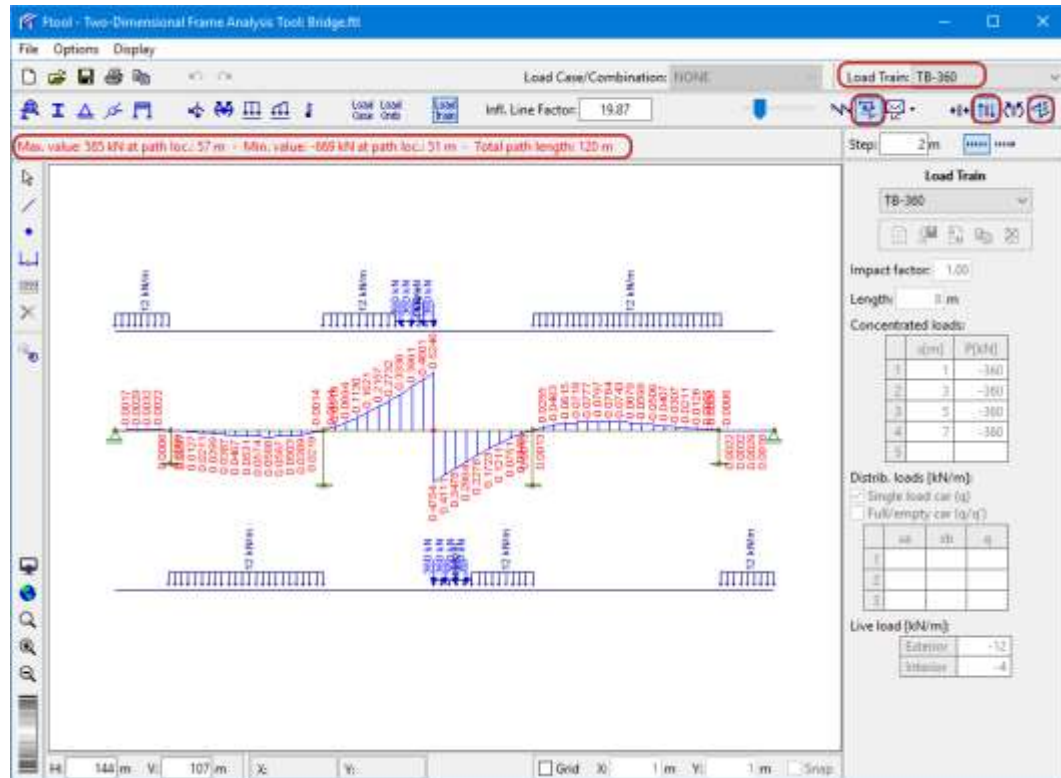
Select result visualization step (2 m) and set transversal display of result values



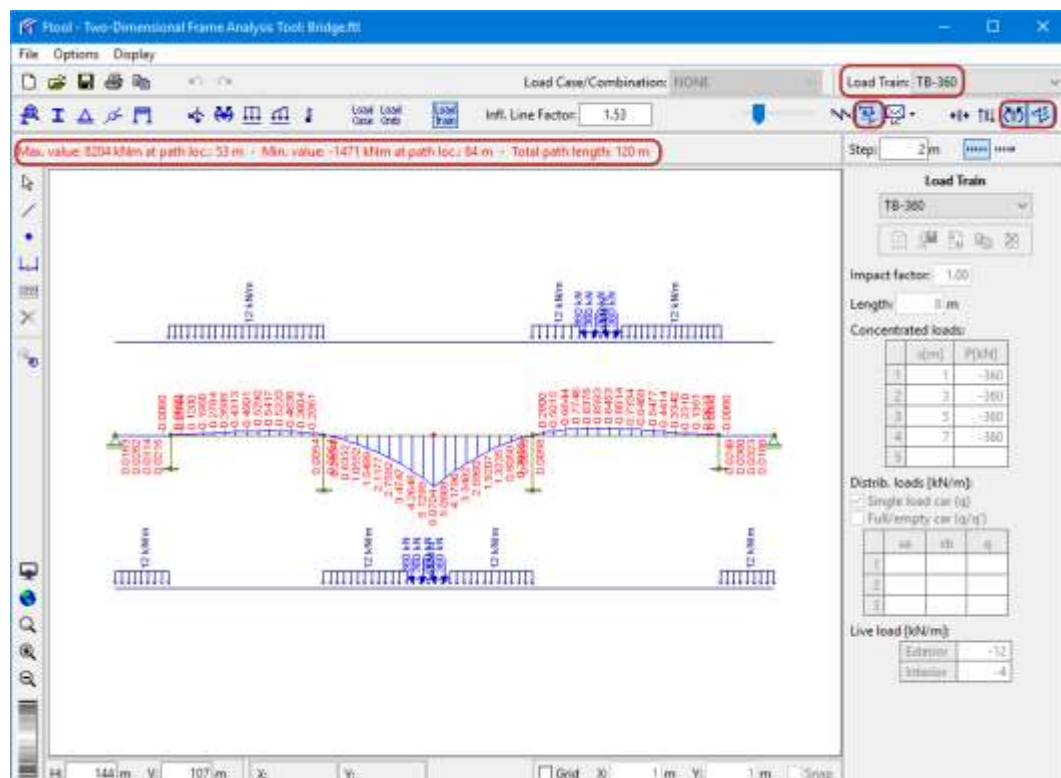
Select cross-section for visualization of shear force influence line result



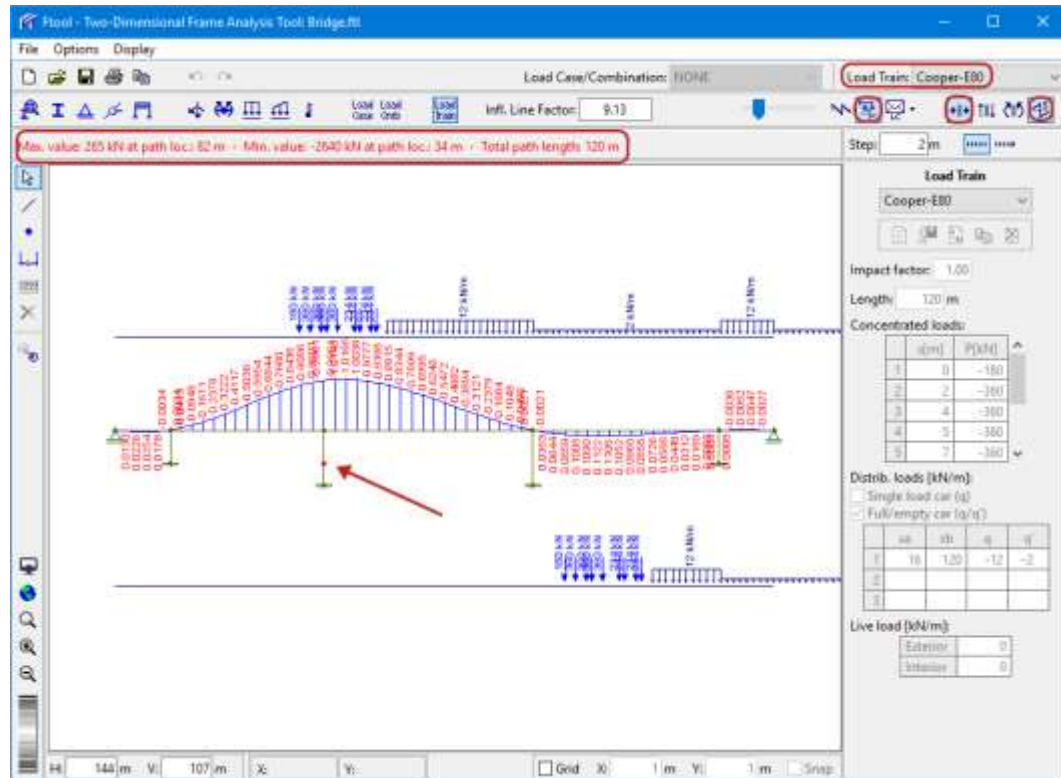
Visualization of shear force influence line result and critical positions (that cause minimum and maximum) of highway load-train



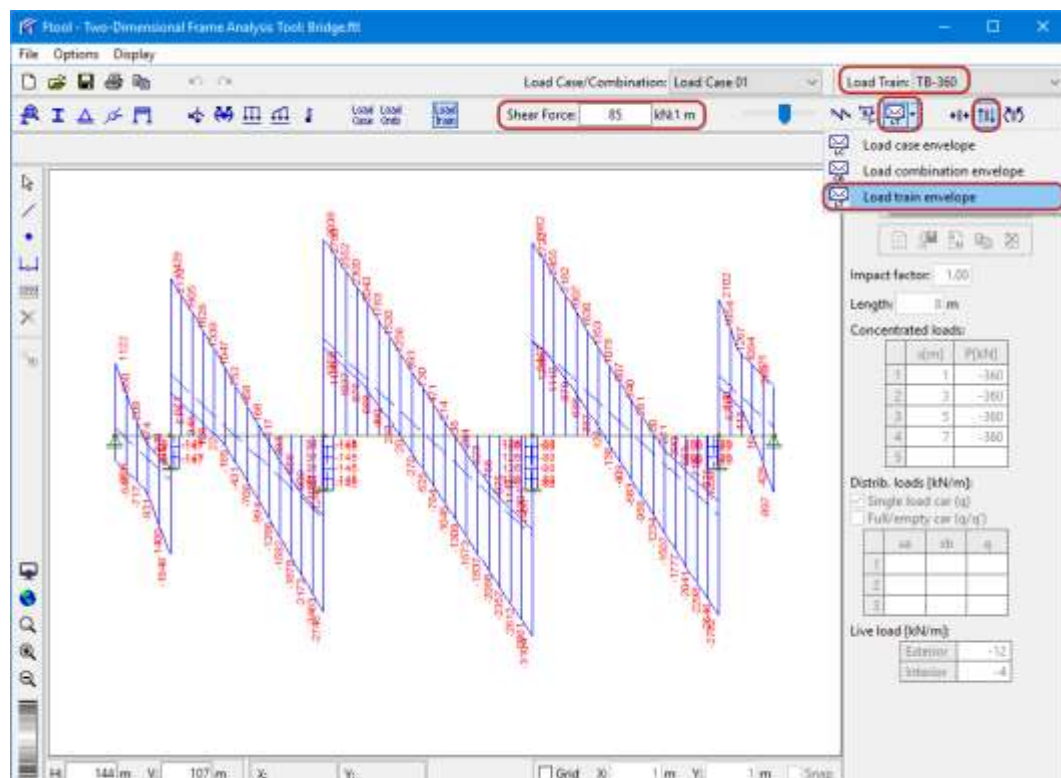
Visualization of bending moment influence line result and critical positions (that cause minimum and maximum) of highway load-train



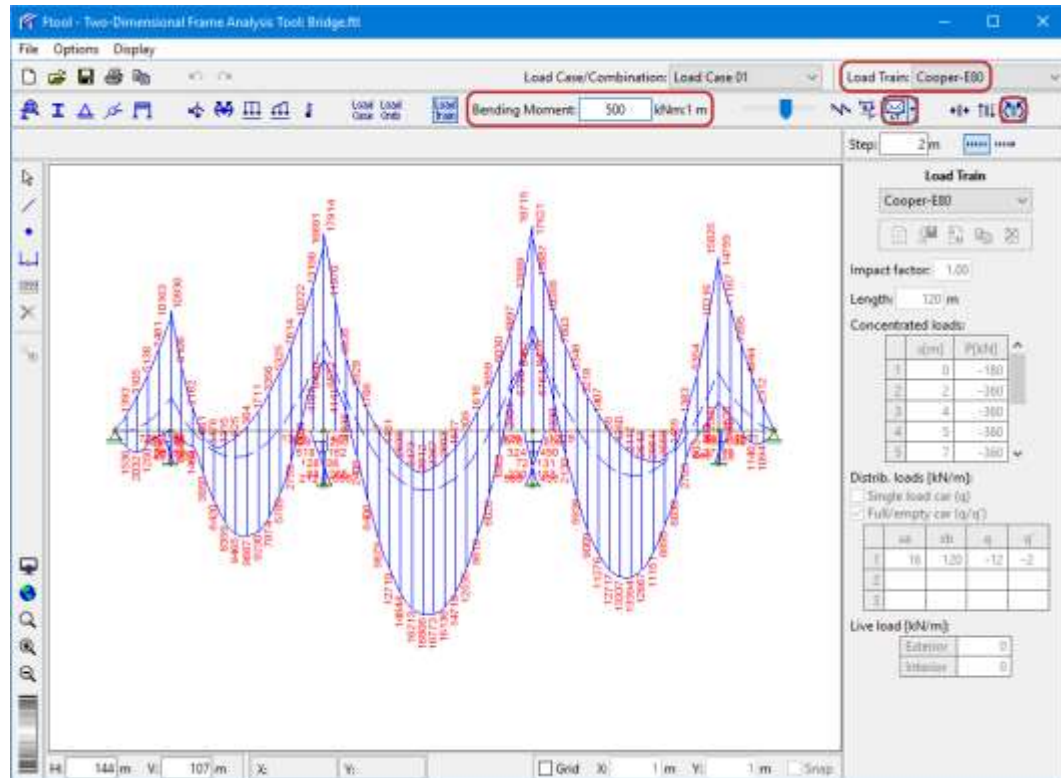
Visualization of axial force influence line result and critical positions (that cause minimum and maximum) of railroad load-train



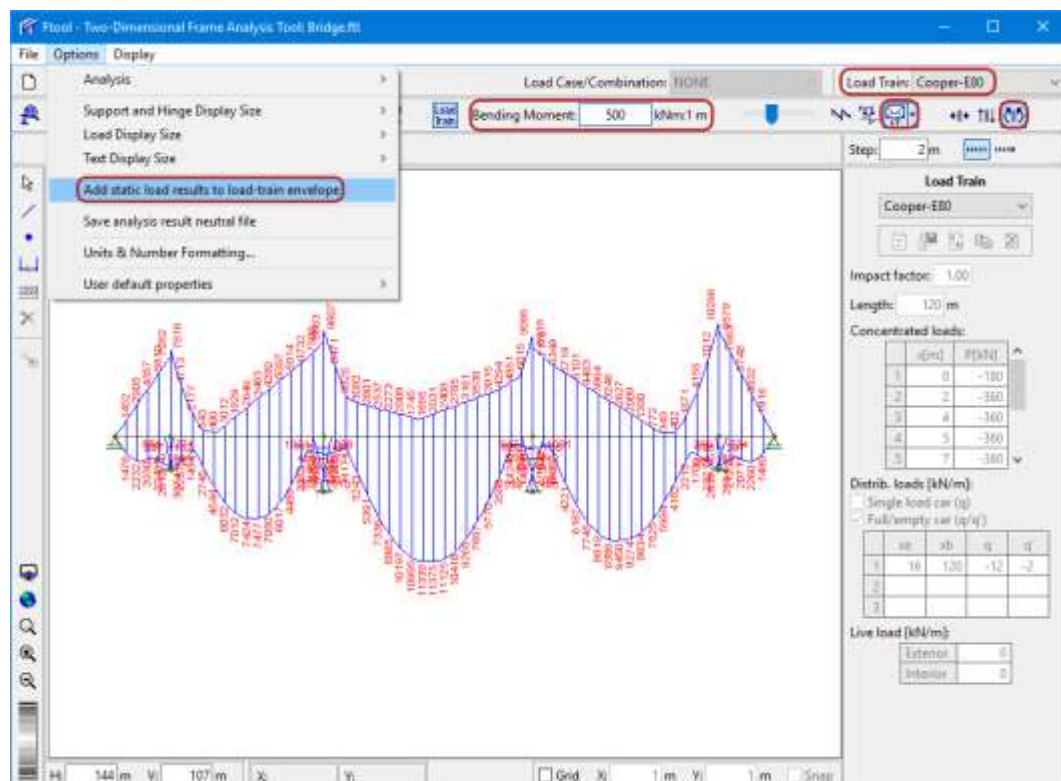
Visualization of shear force envelopes for highway load-train (including effect of permanent load)



Visualization of bending moment envelopes for railroad load-train (including effect of permanent load)



Visualization of bending moment envelopes for railroad load-train (excluding effect of permanent load)



Consulting step results values along central beam member of bending moment envelopes for railroad load-train (excluding effect of permanent load)

