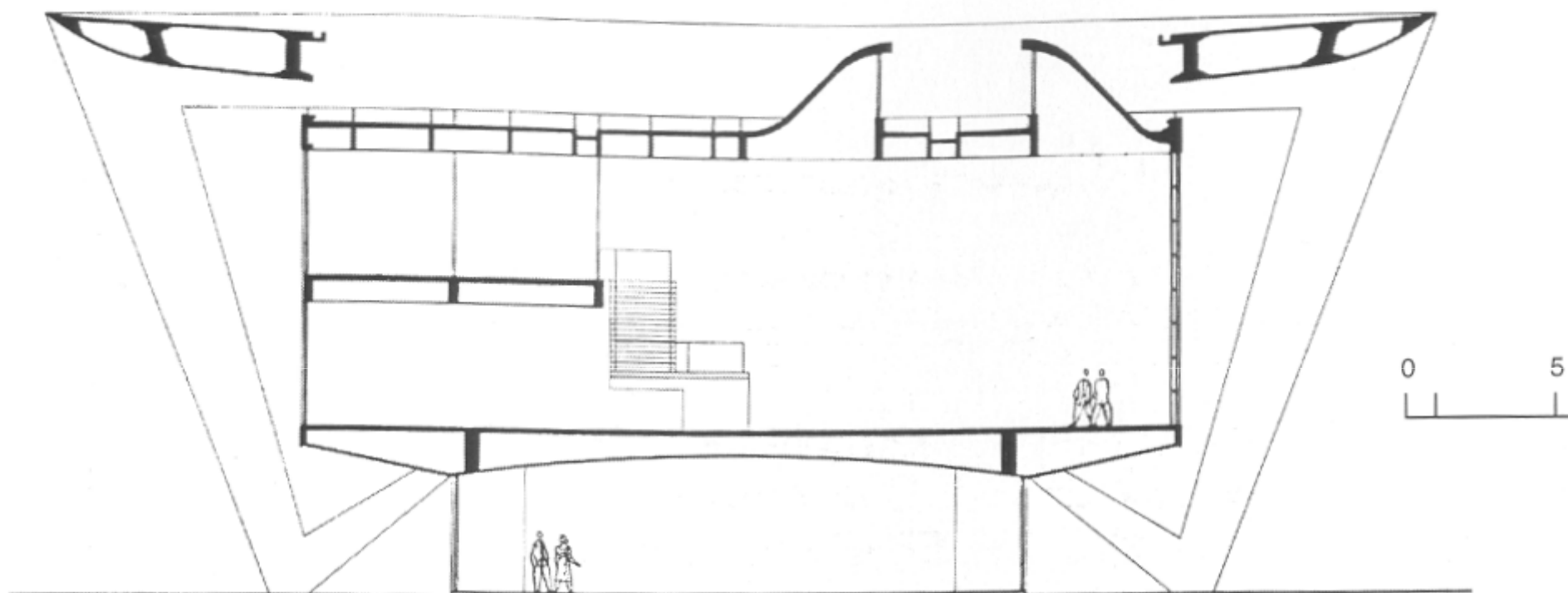
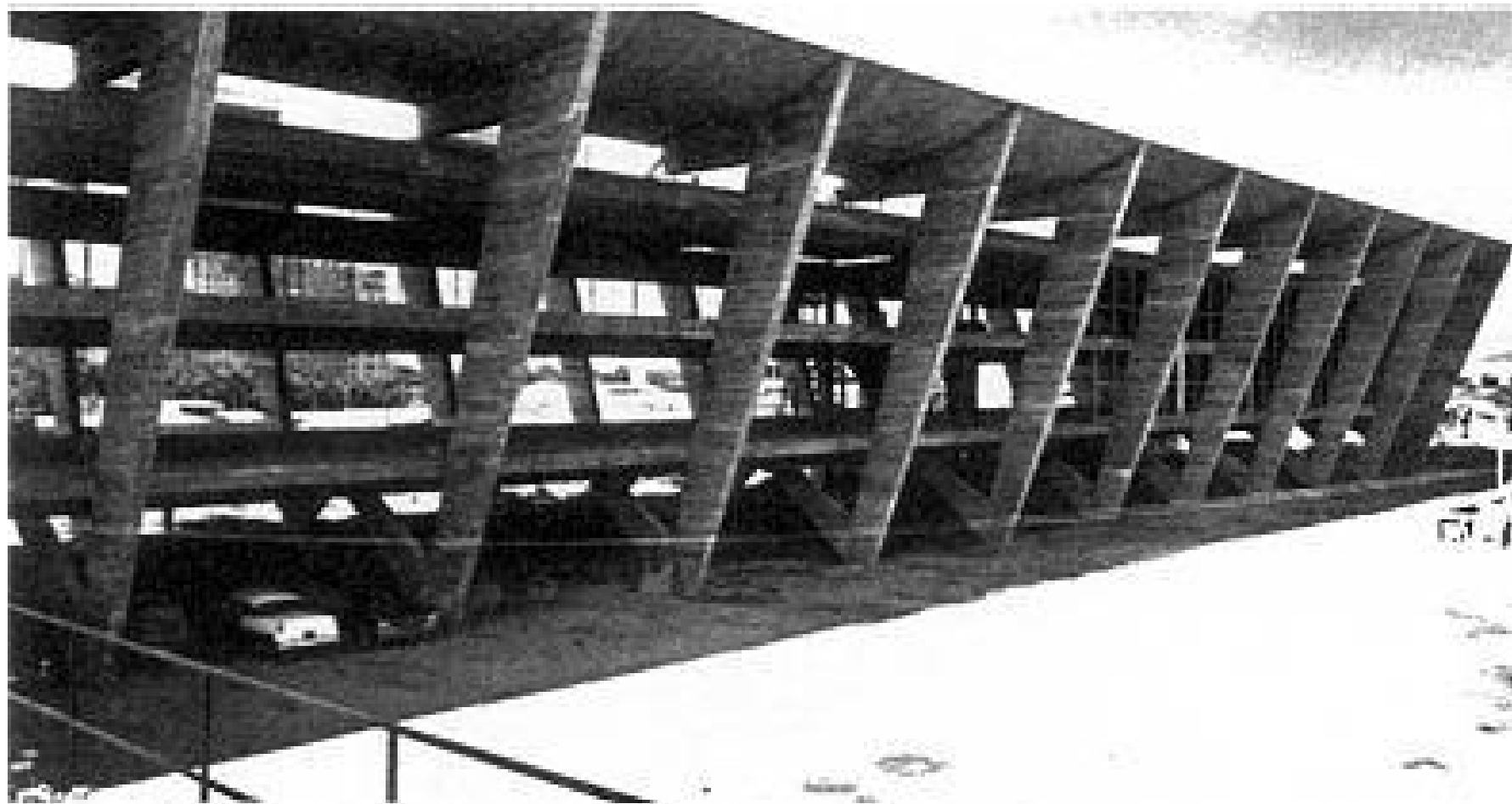


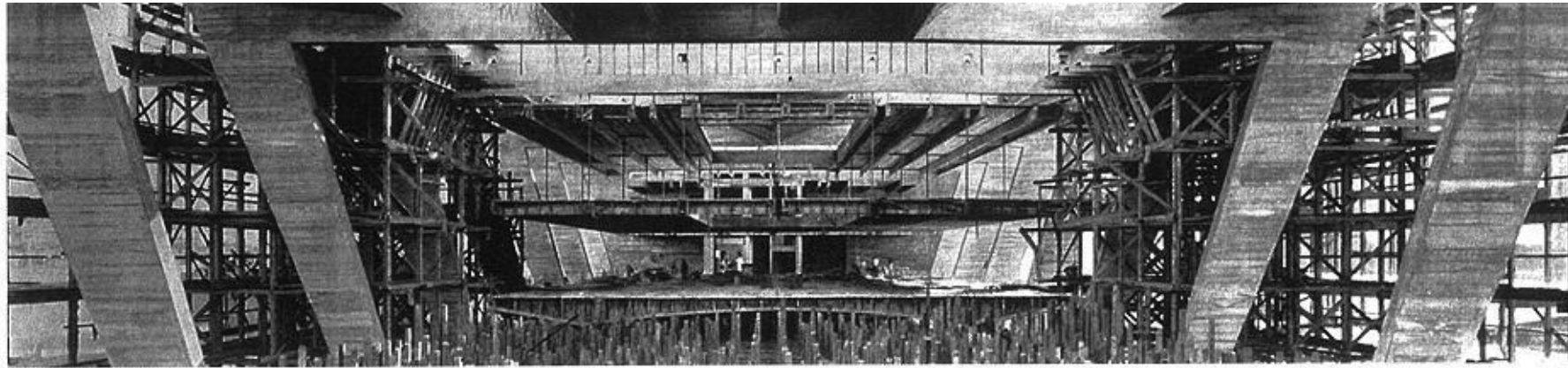
A concepção de um modelo estrutural de um pórtico transversal do Museu de Arte Moderna. Luiz Fernando Martha – PUC-Rio

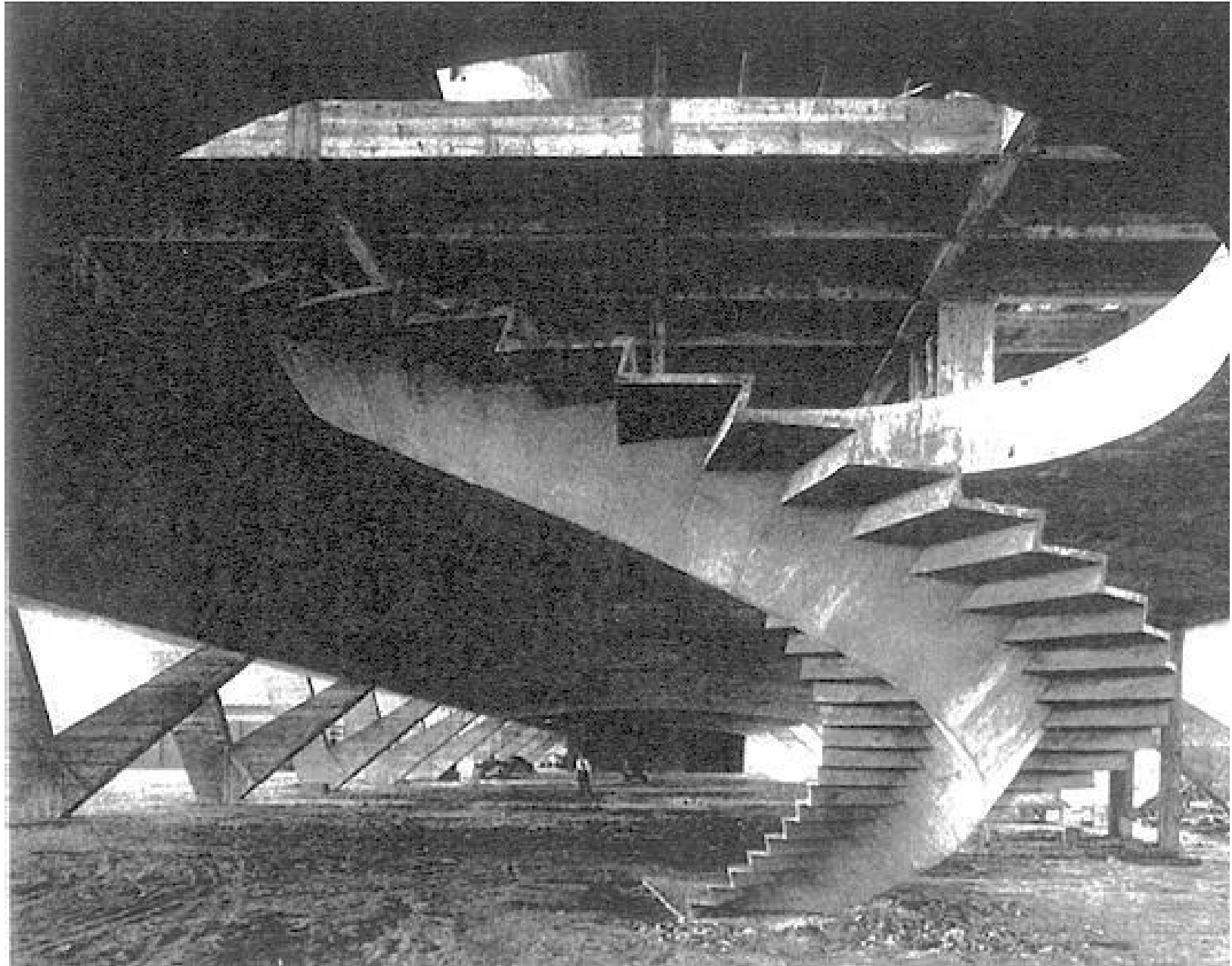




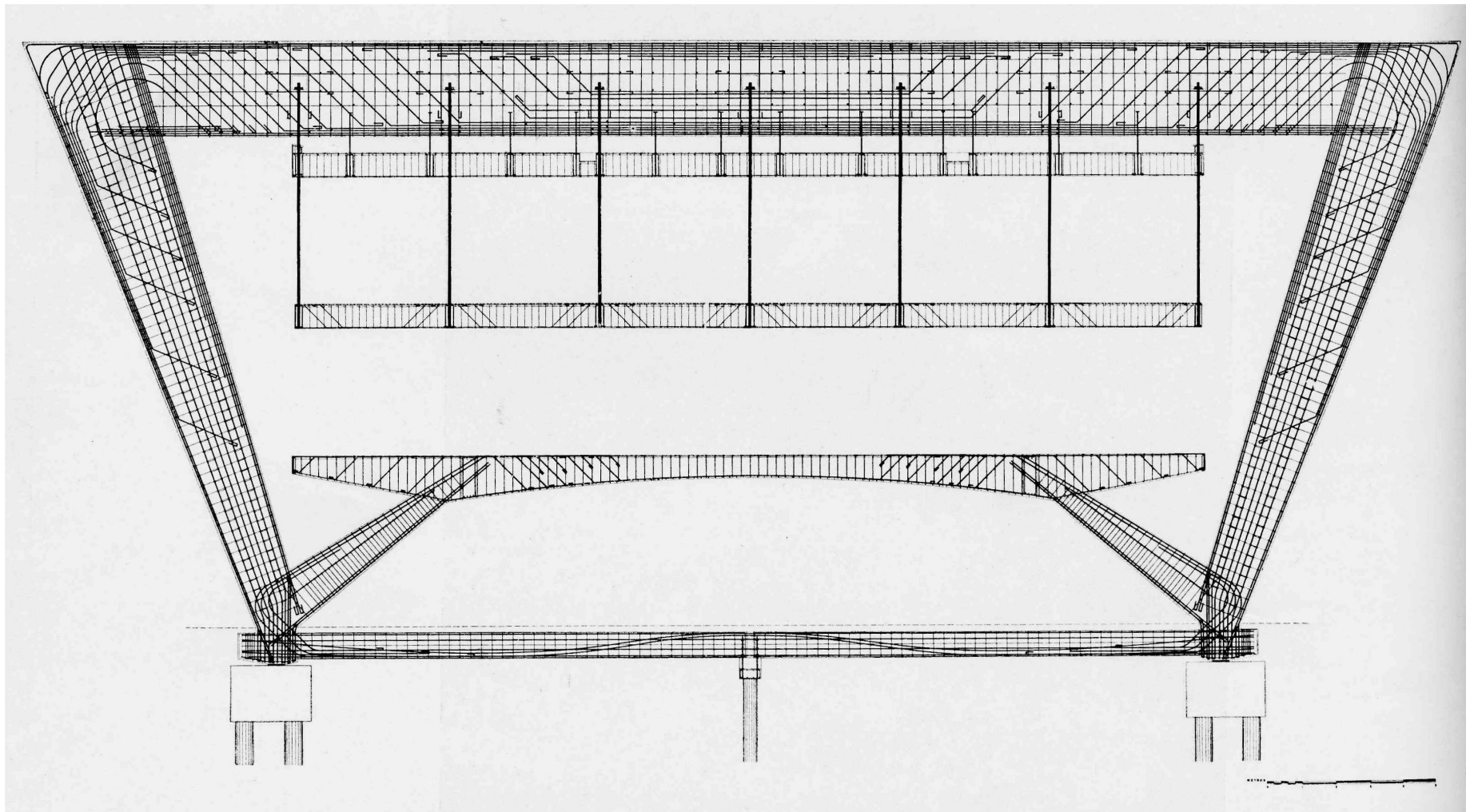
Seção da Galeria de Exposições. Notar iluminação zenital.
Section of exhibition hall. Note the zenithal illumination.



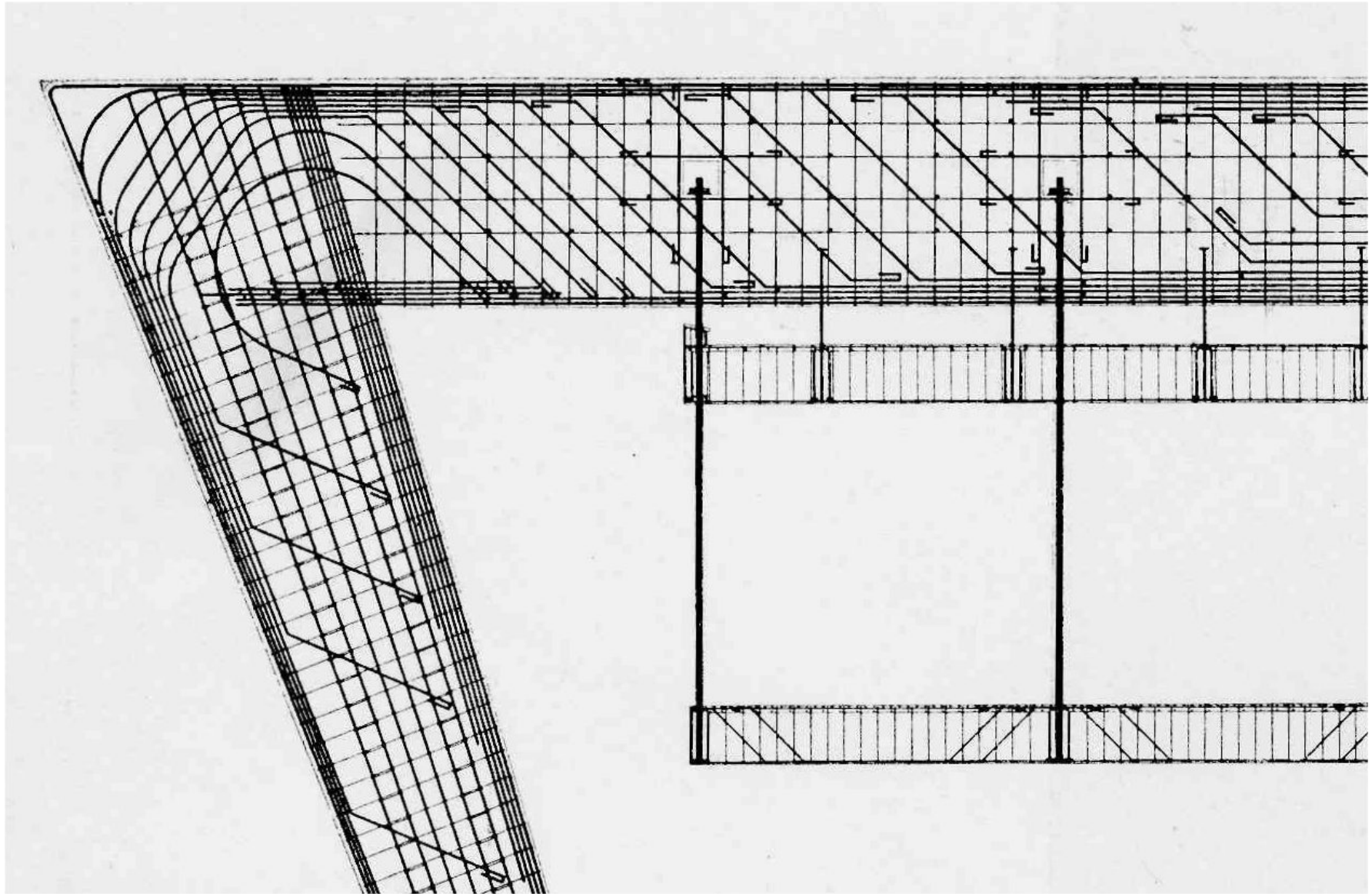


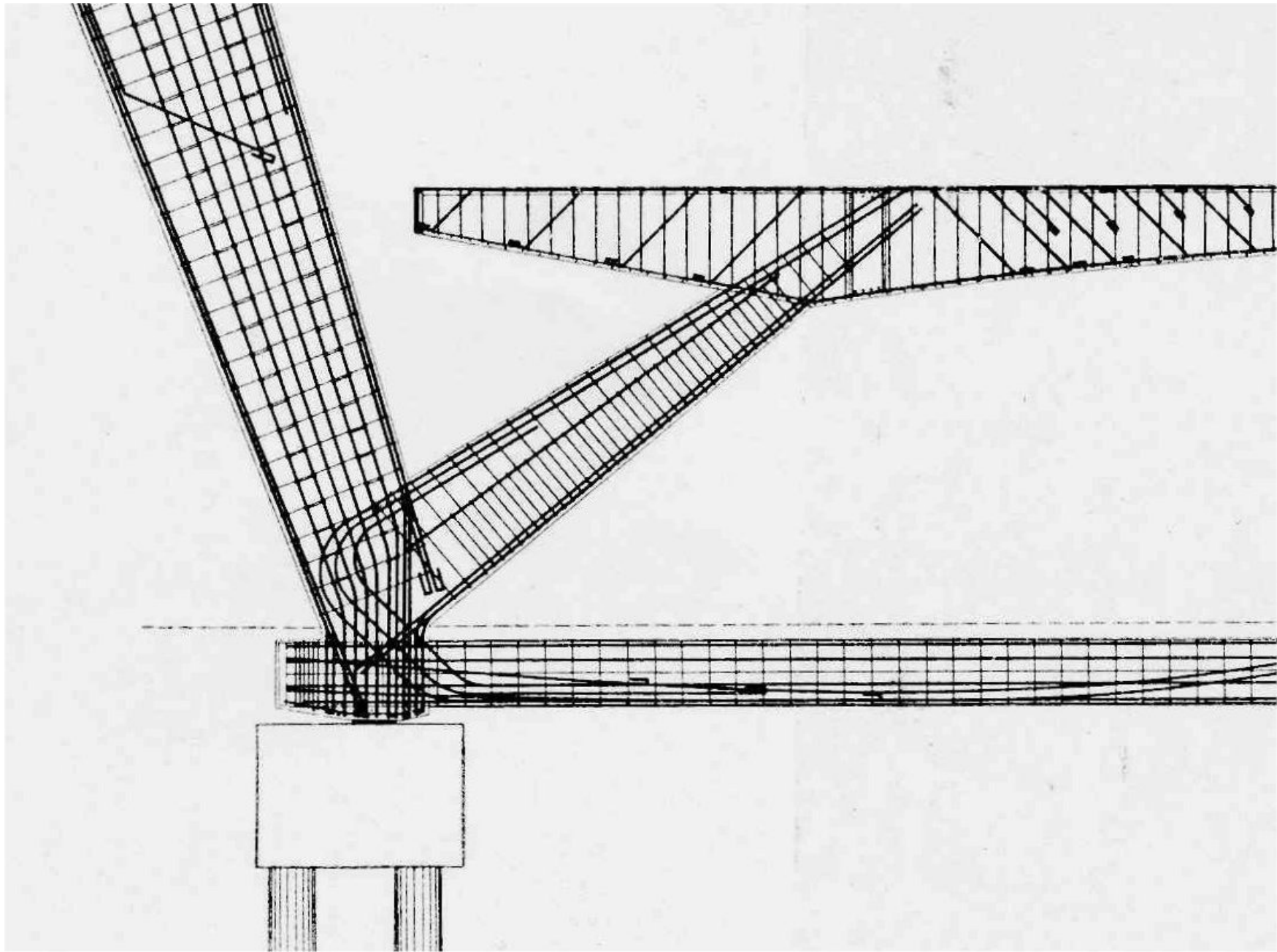


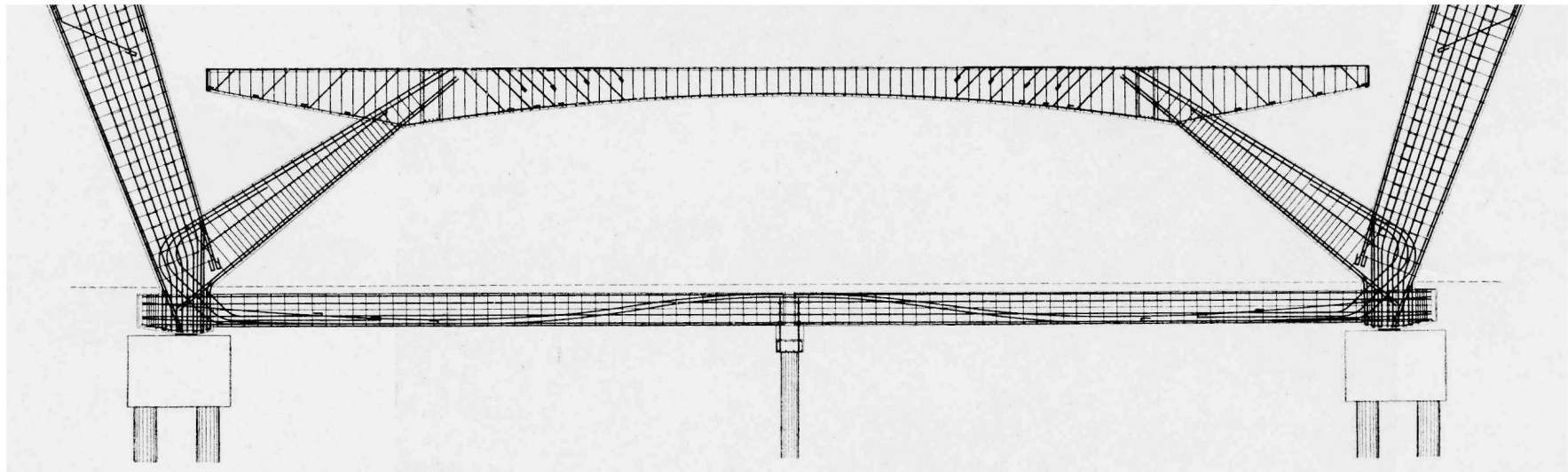


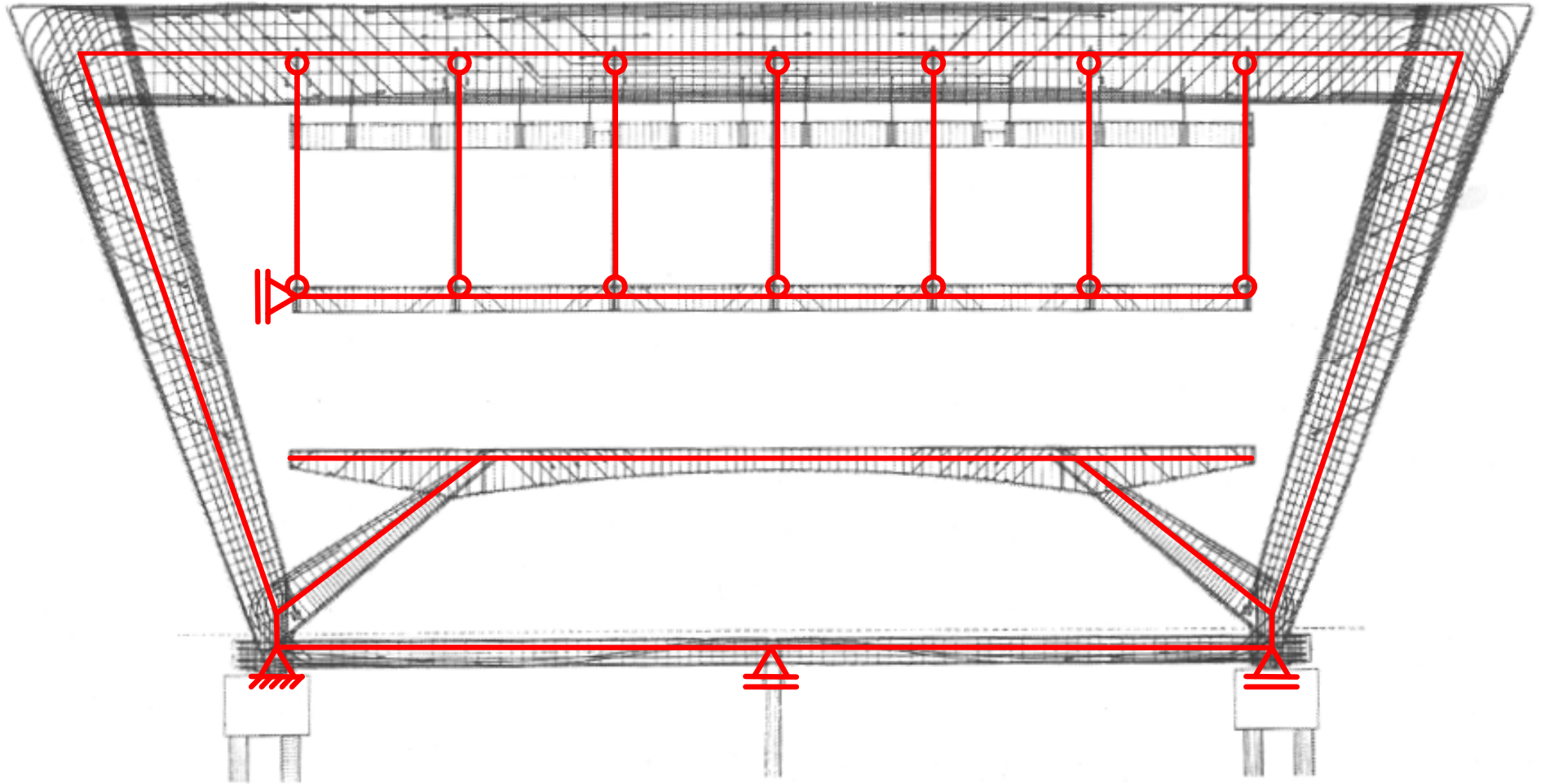


Detalhe das armaduras HELITRAÇO nos grandes quadros rígidos do Museu de Arte Moderna do Rio de Janeiro. (Observem-se os ângulos de curvatura nos nós para evitar concentrações de tensões).









Modelo criado no Ftool: http://www.tecgraf.puc-rio.br/ftp_pub/lfm/ftool_mam.ftl
(<http://www.tecgraf.puc-rio.br/ftool>)

